

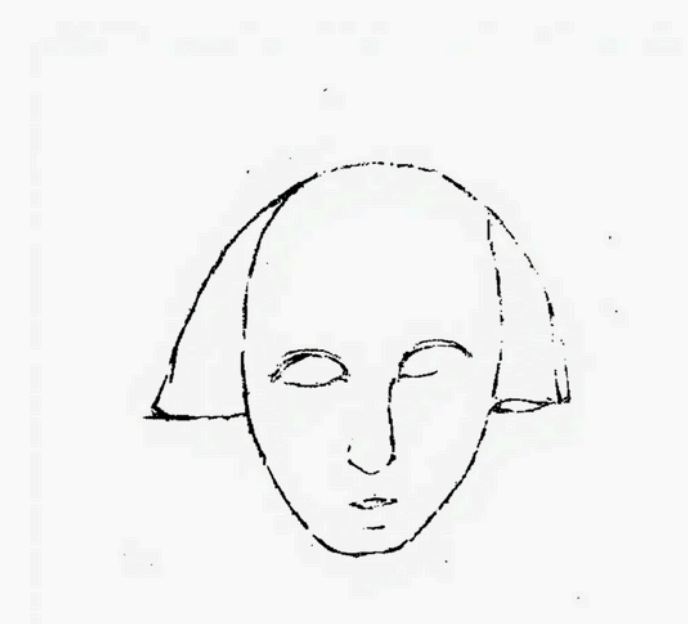


**COLLECTOR'S  
CATALOG**  
KHAZARI EDITION 3

Front cover:  
De Profundis, Salve Fine, 29.7 x 42 cm

Please note that all images have been digitally adjusted for optimal viewing on screens. The original artworks may vary slightly in appearance.

These images may not be used, copied, or shared without explicit permission from the copyright holder.



WWW.KHAZARI.COM

CONTENT

Foreward

Collection I — Salve Fine

*Works investigating mortality and repose through the language of drawing, rendered in pencil and pigment on textured paper.*

Collection II — Form, Memory, and Material

*An extended body of work examining portrait and solemn expression.*

Practical Information

All artworks featured in this catalogue are original works on paper. Each piece is individually signed and dated by the artist, accompanied by a certificate of authenticity issued upon acquisition.

At present, works are unframed, allowing collectors to frame according to their own conservation preferences, display environment, or curatorial standards. Should framing be required prior to delivery, professional recommendations can be arranged upon request. Framing is not included in the listed values unless otherwise specified.

All works are stored in a climate-controlled studio environment and handled using museum-standard procedures. Each piece is carefully inspected prior to dispatch, and protective interleaving and acid-free packaging materials are used to ensure the safe transport of delicate paper surfaces.

For shipping, all artworks are packed flat or rolled in reinforced tubes (depending on size and medium) and dispatched via trackable courier services specializing in art logistics. International collectors are advised that customs duties, taxes, or import fees (where applicable) are the responsibility of the recipient. Full documentation and tracking details will be provided once the work has been dispatched.

Collectors are encouraged to allow time for careful packaging, handling, and documentation before shipment. Estimated delivery timelines and insurance coverage can be discussed prior to purchase to accommodate specific requirements or deadlines.

Should collectors wish to inquire about framing, conservation, or installation, private consultations may be arranged upon request.

All enquiries, including those related to acquisition, pricing, shipping, or bespoke framing, may be directed via the official website at [www.khazari.com](http://www.khazari.com) or by email at [enquiries@khazari.com](mailto:enquiries@khazari.com).

All prices are available on request.

## FOREWARD

*Salve Fine* stands is a series of portraits long awaited as the final hour dawns. It looks at the end of the time, as a meditation on the terminal moment of existence, the instant when time exhausts its final measure and consciousness turns inward upon itself. The face is rendered in a state beyond sorrow. Lamentation governs each face. Acceptance of finality as the last form of peace. The gaze, devoid of pleading or defiance, reflects a mind stripped of temporal illusion, where memory, expectation, and presence merge into one still expanse. *Salve Fine* stares at the absolute cessation of narrative, a portrait of the world's silence at the hour of its own extinction.

In the third edition, the traditional drawing style has converged with the classical. The drawing is executed on textured canvas or watercolor paper, a medium that enforces both restraint and permanence. Sparse diffusion of color has been added to accent the drawing without layering on top or distracting it. The substance remains the dance of the pencils. The portrait appears to fade even as it is observed, embodying the quiet entropy that defines *Salve Fine*.

The key title, *De Profundis*, captures the quiet moment when sorrow no longer seeks expression. The woman in the portrait doesn't cry, though her entire face seems to be made of tears. There's a stillness in her gaze, she has finally accepted that the end has arrived and nothing more can be done. The sadness here is what remains when emotion has exhausted itself. That lump in the throat, that ache which has no sound. The drawing speaks about helplessness, yet not without dignity: the effort to remain composed even as everything else begins to fade.

The earth weeps with its children, for the end of eras that brings reckoning, brings renewal as well.



DE PROFUNDIS  
(May, 2019)

Drawings No. 0519 - 1.3.1.

From the collection Salve Fine

Pencil on canvas paper  
11.7 x 16.5 inches (29.7 x 42 cm)

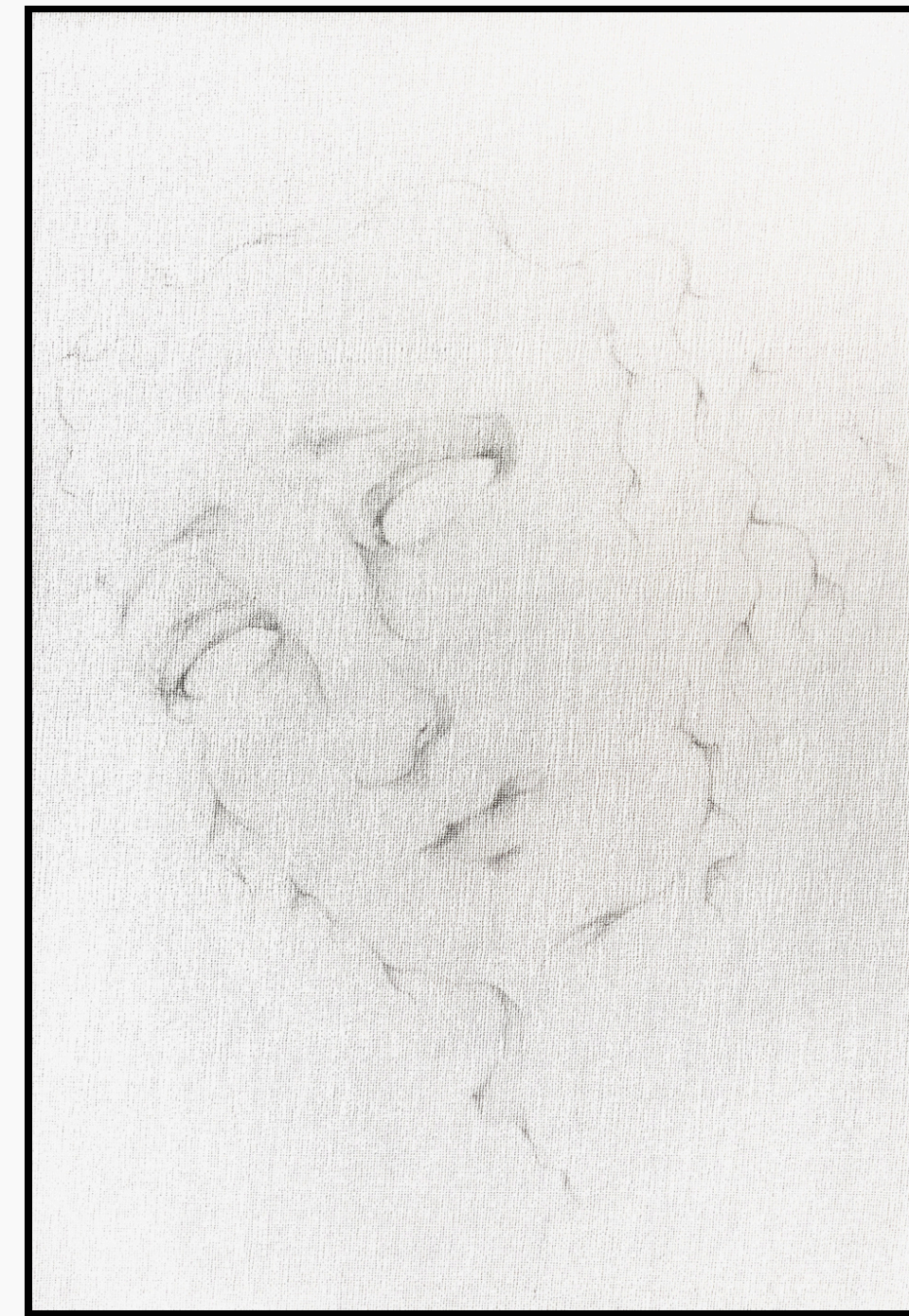


ORA MORTIS  
(May, 2019)

Drawings No. 0519 - 1.3.3.

From the collection Salve Fine

Pencil on canvas paper  
11.7 x 16.5 inches (29.7 x 42 cm)



LACRIME  
(May, 2019)

Drawings No. 0519 - 1.3.5.

From the collection Salve Fine

Pencil on canvas paper  
11.7 x 16.5 inches (29.7 x 42 cm)

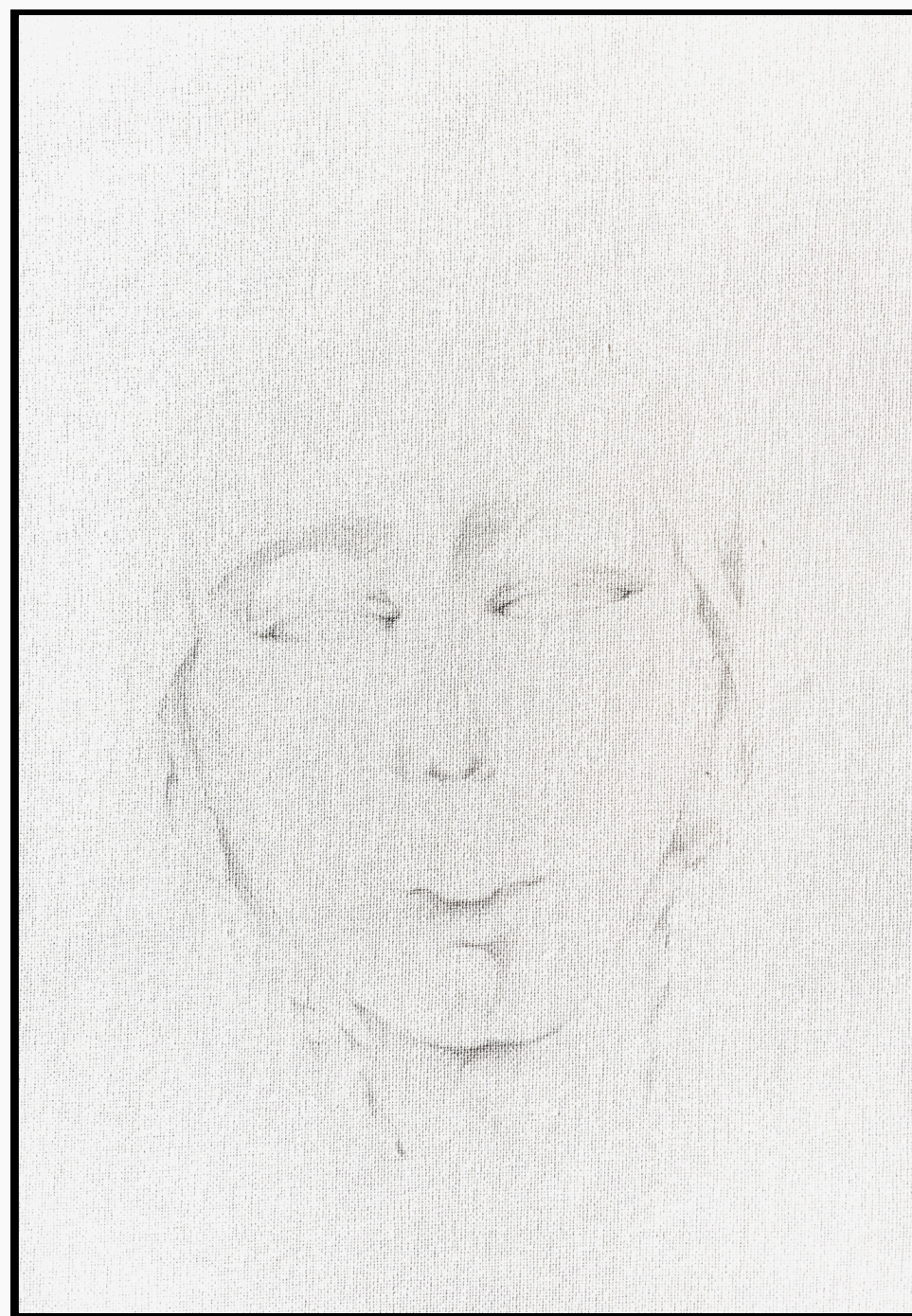


LEGIS SOMNIUM  
(May, 2019)

Drawings No. 0519 - 1.3.2.

From the collection Salve Fine

Pencil on canvas paper  
11.7 x 16.5 inches (29.7 x 42 cm)



SALVATORE SALVAMI  
(May, 2019)

Drawings No. 0519 - 1.3.4.

From the collection Salve Fine

Pencil on canvas paper  
11.7 x 16.5 inches (29.7 x 42 cm)



CINIS SACER  
(May, 2019)

Drawings No. 0519 - 1.3.6.

From the collection Salve Fine

Pencil on canvas paper  
11.7 x 16.5 inches (29.7 x 42 cm)



THE WITNESS  
(January, 2020)

Individual

Drawings No. 0120 - 2.4.1.

Pencil on watercolor paper  
8.3 x 11.7 inches (21.0 x 29.7. cm)

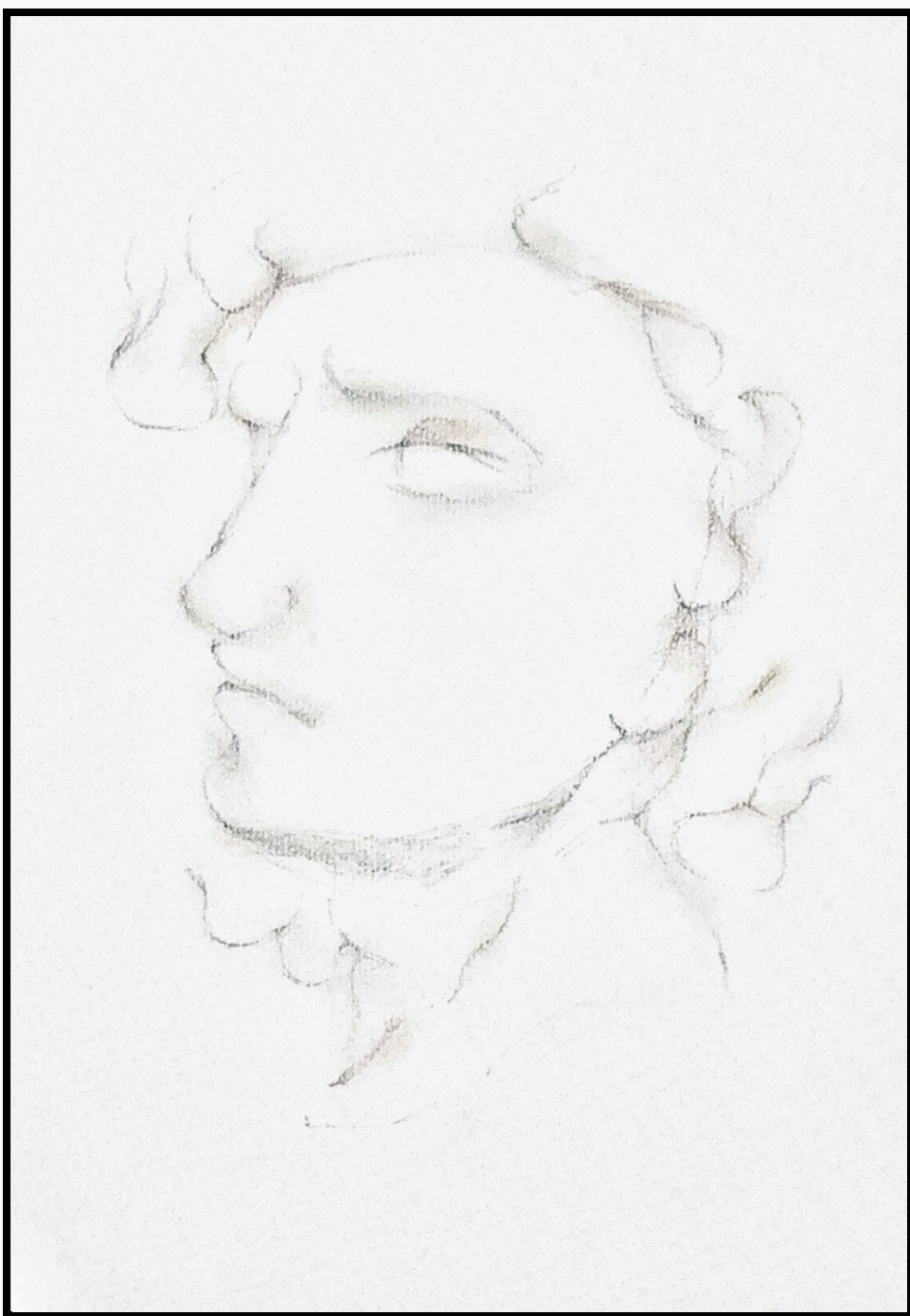


MANN  
(January, 2020)

Individual

Drawings No. 0120 - 2.4.4.

Pencil on watercolor paper  
8.3 x 11.7 inches (21.0 x 29.7. cm)

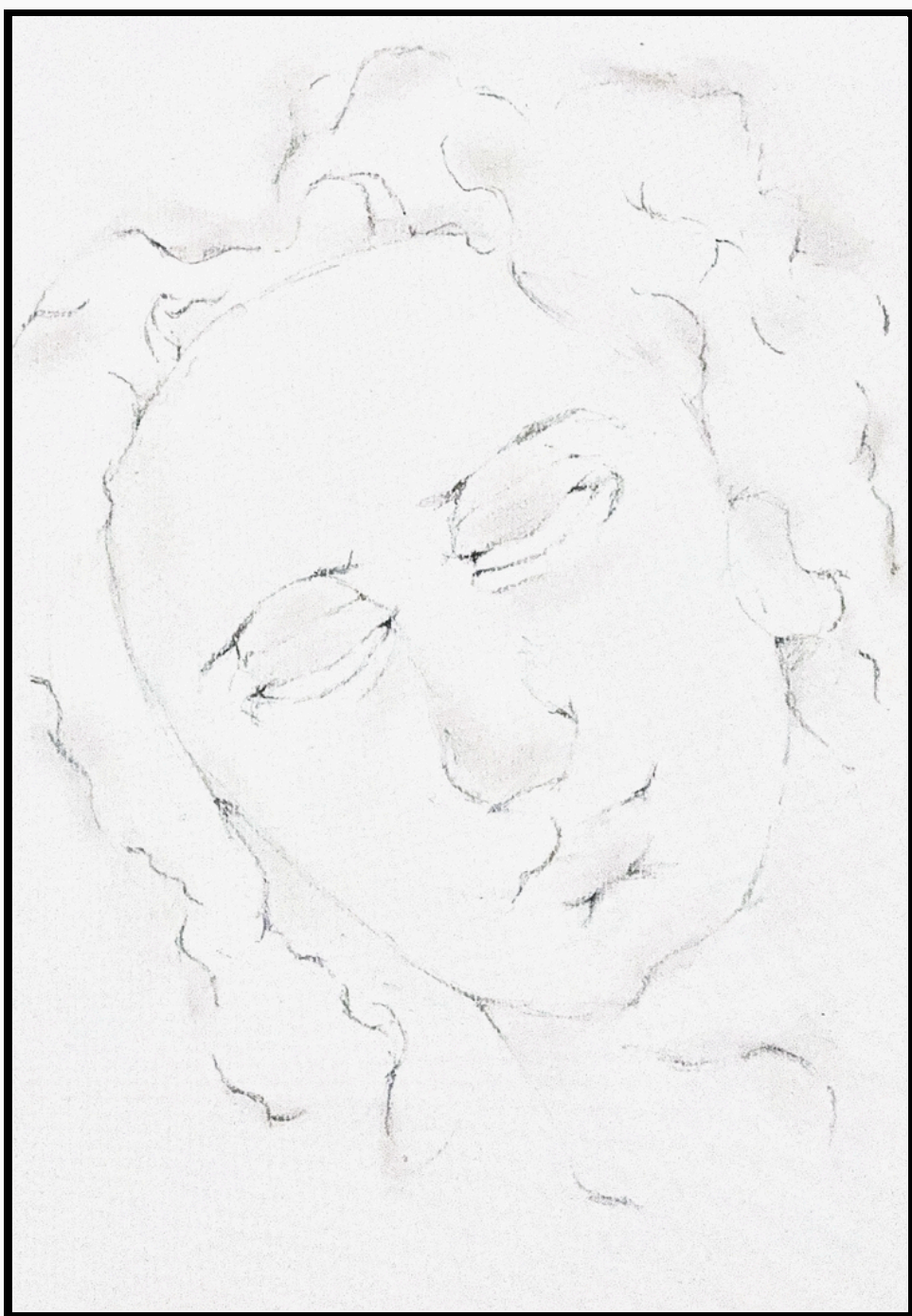


JACOB  
(January, 2020)

Individual

Drawings No. 0120 - 2.4.2.

Pencil on watercolor paper  
8.3 x 11.7 inches (21.0 x 29.7. cm)

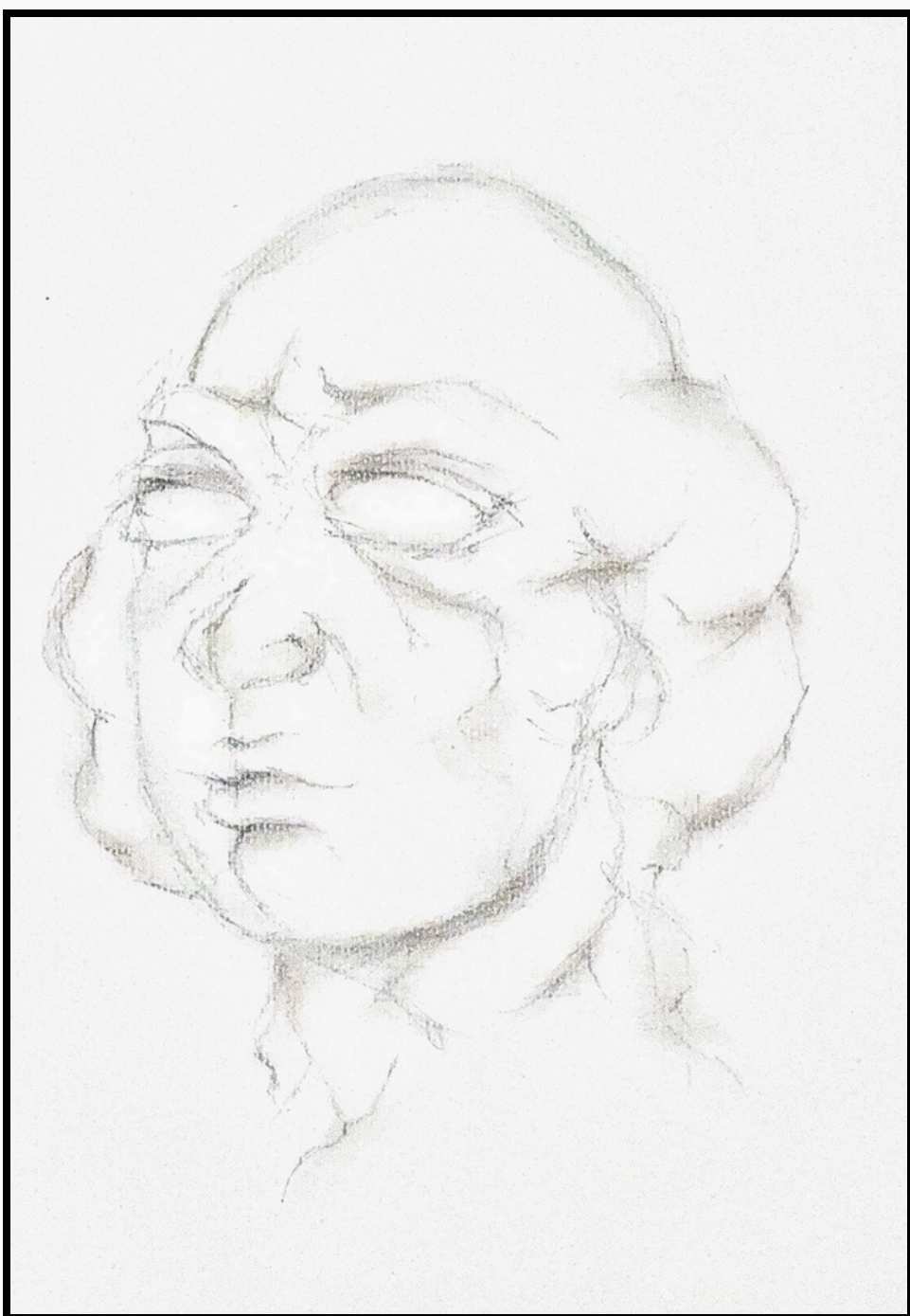


HERSCHEL  
(January, 2020)

Individual

Drawings No. 0120 - 2.4.5.

Pencil on watercolor paper  
8.3 x 11.7 inches (21.0 x 29.7. cm)



THE CALLER  
(January, 2020)

Individual

Drawings No. 0120 - 2.4.3.

Pencil on watercolor paper  
8.3 x 11.7 inches (21.0 x 29.7. cm)



HEARSE  
(January, 2020)

Individual

Drawings No. 0120 - 2.4.6.

Pencil on watercolor paper  
8.3 x 11.7 inches (21.0 x 29.7. cm)



Drawings No. 0519 - 1.3.5.

For enquiries regarding acquisitions, licensing, or any other questions related to the artworks featured in this catalogue, please visit the website at [www.khazari.com](http://www.khazari.com), or contact directly via email at [enquiries@khazari.com](mailto:enquiries@khazari.com).

All artworks featured in this catalogue are available for acquisition subject to availability. Our team ensures the highest standards of packaging, handling, and shipping. Each piece is carefully prepared using archival-quality materials and protective measures to guarantee safe transit.

Delivery timelines vary depending on location and the nature of the artwork. Upon acquisition, detailed shipping instructions and tracking information will be provided. We recommend contacting us for personalized assistance with handling, installation, or any specific logistical requirements.