



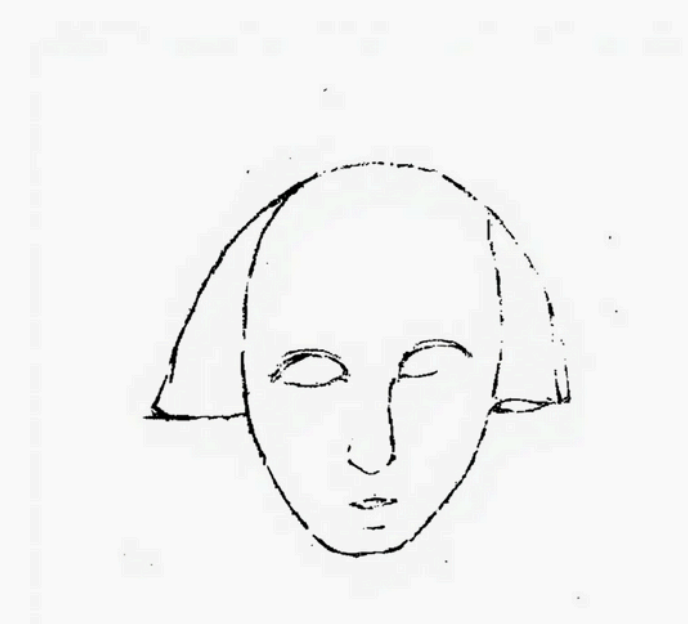
COLLECTOR'S CATALOG

KHAZARI EDITION 1

Front cover:
Theraposa, Gossamer, 21.0 x 29.7. cm

Please note that all images have been digitally adjusted for optimal viewing on screens. The original artworks may vary slightly in appearance.

These images may not be used, copied, or shared without explicit permission from the copyright holder.



W W W . K H A Z A R I . C O M

CONTENT

Foreward

Collection I — Merine
Air Drawn faces and figures.

Collection II — Wolf
Masculine Air Drawn drawings.

Collection III — Gossamer
Air Drawn female figures.

Collection IV — Circus
Soft pink circus faces.

Collection IV — Hermon
Warm toned drawings on textured paper.

Collection IV — The Holy
Air Drawn drawings.

Practical Information

All artworks featured in this catalogue are original works on paper. Each piece is individually signed and dated by the artist, accompanied by a certificate of authenticity issued upon acquisition.

At present, works are unframed, allowing collectors to frame according to their own conservation preferences, display environment, or curatorial standards. Should framing be required prior to delivery, professional recommendations can be arranged upon request. Framing is not included in the listed values unless otherwise specified.

All works are stored in a climate-controlled studio environment and handled using museum-standard procedures. Each piece is carefully inspected prior to dispatch, and protective interleaving and acid-free packaging materials are used to ensure the safe transport of delicate paper surfaces.

For shipping, all artworks are packed flat or rolled in reinforced tubes (depending on size and medium) and dispatched via trackable courier services specializing in art logistics. International collectors are advised that customs duties, taxes, or import fees (where applicable) are the responsibility of the recipient. Full documentation and tracking details will be provided once the work has been dispatched.

Collectors are encouraged to allow time for careful packaging, handling, and documentation before shipment. Estimated delivery timelines and insurance coverage can be discussed prior to purchase to accommodate specific requirements or deadlines.

Should collectors wish to inquire about framing, conservation, or installation, private consultations may be arranged upon request.

All enquiries, including those related to acquisition, pricing, shipping, or bespoke framing, may be directed via the official website at www.khazari.com or by email at enquiries@khazari.com.

All prices are available on request.

FOREWARD

Edition One introduces Air Drawing, a self-titled technique characterized by delicate pencil lines that hover between the tangible and the intangible. Hints of color are applied in the faintest amounts. Soft paper is chosen to preserve the smoothness and subtlety of each stroke, allowing the medium to breathe.

A central theme of this edition is the concept of Empty Faces. In these works, men and women are rendered without distinct features. At first, the artist hesitated, questioning whether emotion could be conveyed without eyes, mouths, or other markers of individuality. The first faceless figure, however, revealed a surprising depth. Emotion, mystery, and essence emerged more vividly than with a fully detailed face. Whereas a face with eyes and mouth speaks of a specific person, an empty face communicates a persona, a universal presence with which any viewer might connect.

The work is intended to be light, calm, and clean, drawing the viewer in as softly as a whisper draws attention. Restraint is paramount. Every pencil mark is deliberate, telling the story on its own. Each drawing must carry its power and intimacy independently, without requiring enhancement from other media. Color, when applied, is done sparingly. Any excess pressure or force risks diminishing the quiet strength of the piece.



LEHMAN
(April, 2016)

Drawings No. 0416 - 12.4.1.

From the collection Merine

Pencil on paper
8.3 x 11.7 inches (21.0 x 29.7. cm)

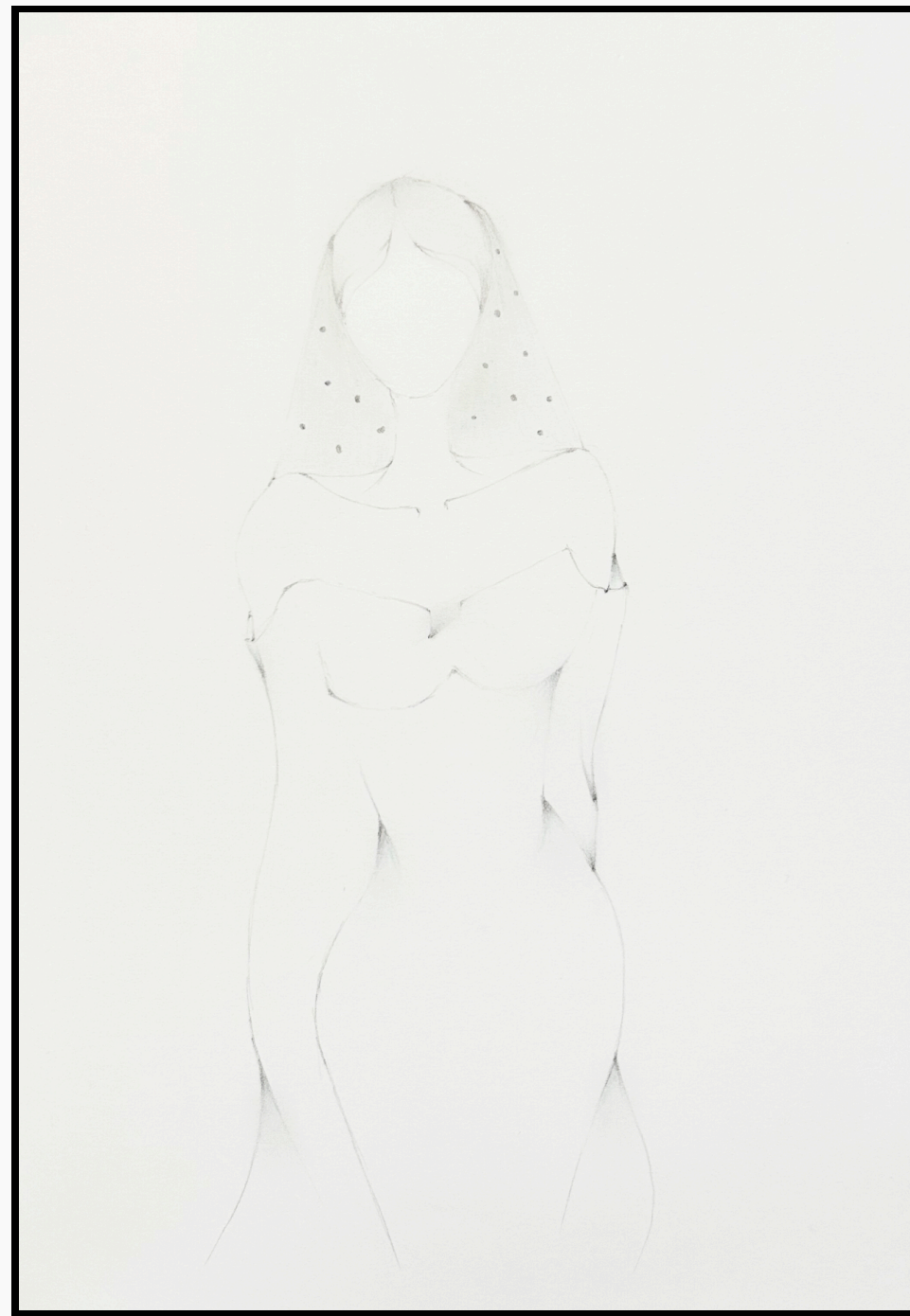


MERINE
(April, 2016)

Drawings No. 0416 - 12.4.4.

From the collection Merine

Pencil on paper
8.3 x 11.7 inches (21.0 x 29.7. cm)



FIDENZA
(April, 2016)

Drawings No. 0416 - 12.4.7.

From the collection Merine

Pencil on paper
8.3 x 11.7 inches (21.0 x 29.7. cm)

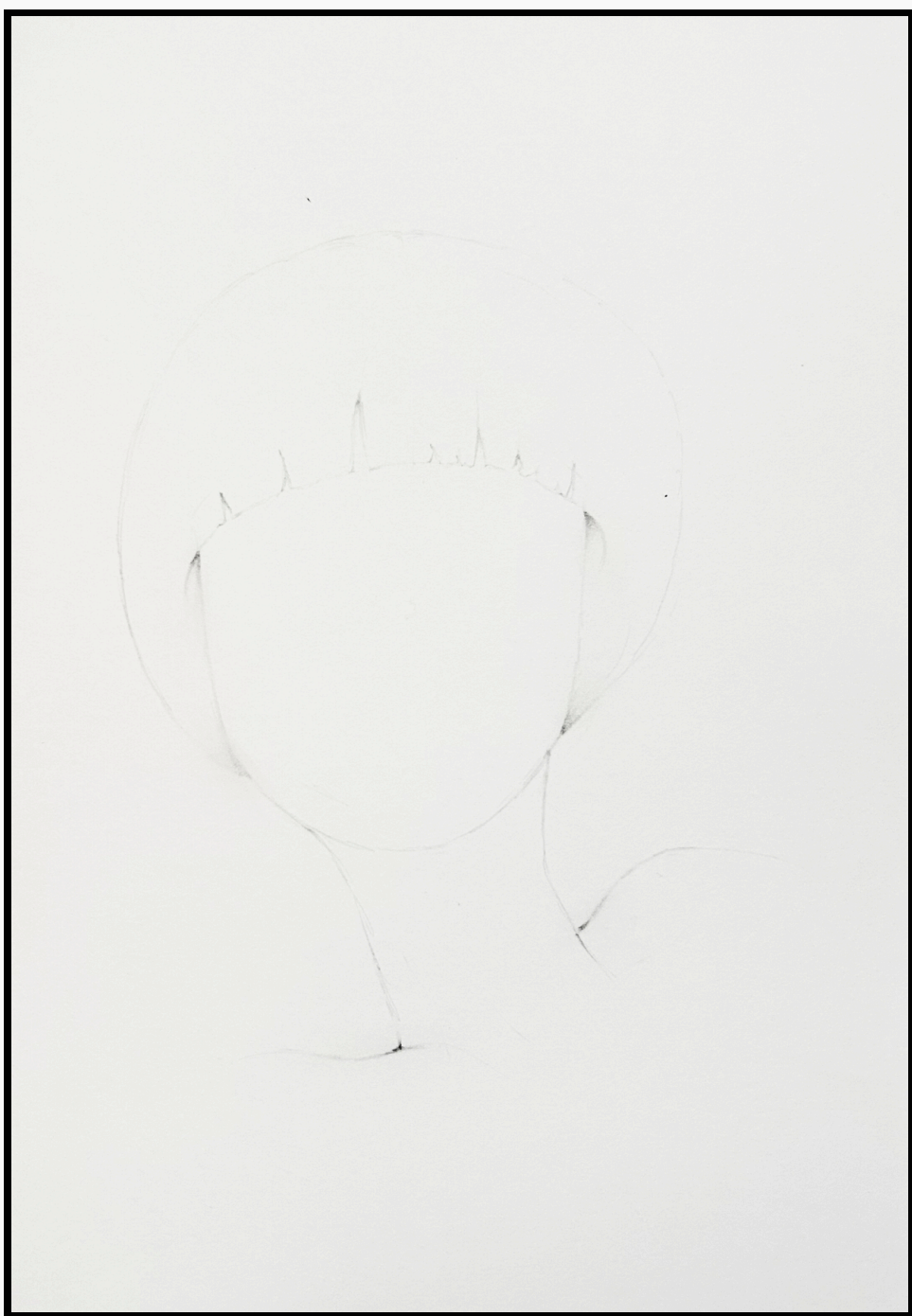


CAREM
(April, 2016)

Drawings No. 0416 - 12.4.2.

From the collection Merine

Pencil on paper
8.3 x 11.7 inches (21.0 x 29.7. cm)

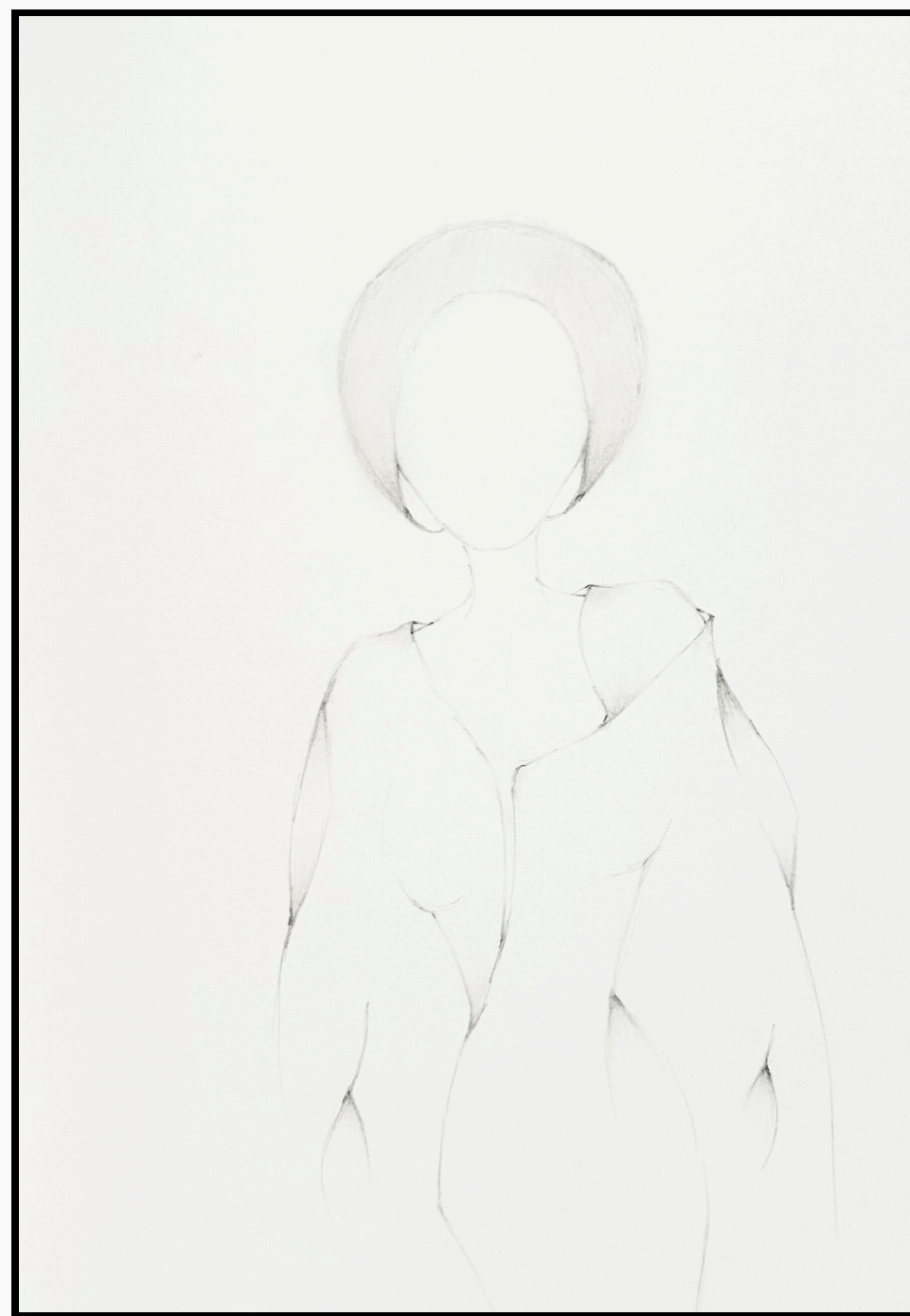


SHILOH
(April, 2016)

Drawings No. 0416 - 12.4.5.

From the collection Merine

Pencil on paper
8.3 x 11.7 inches (21.0 x 29.7. cm)

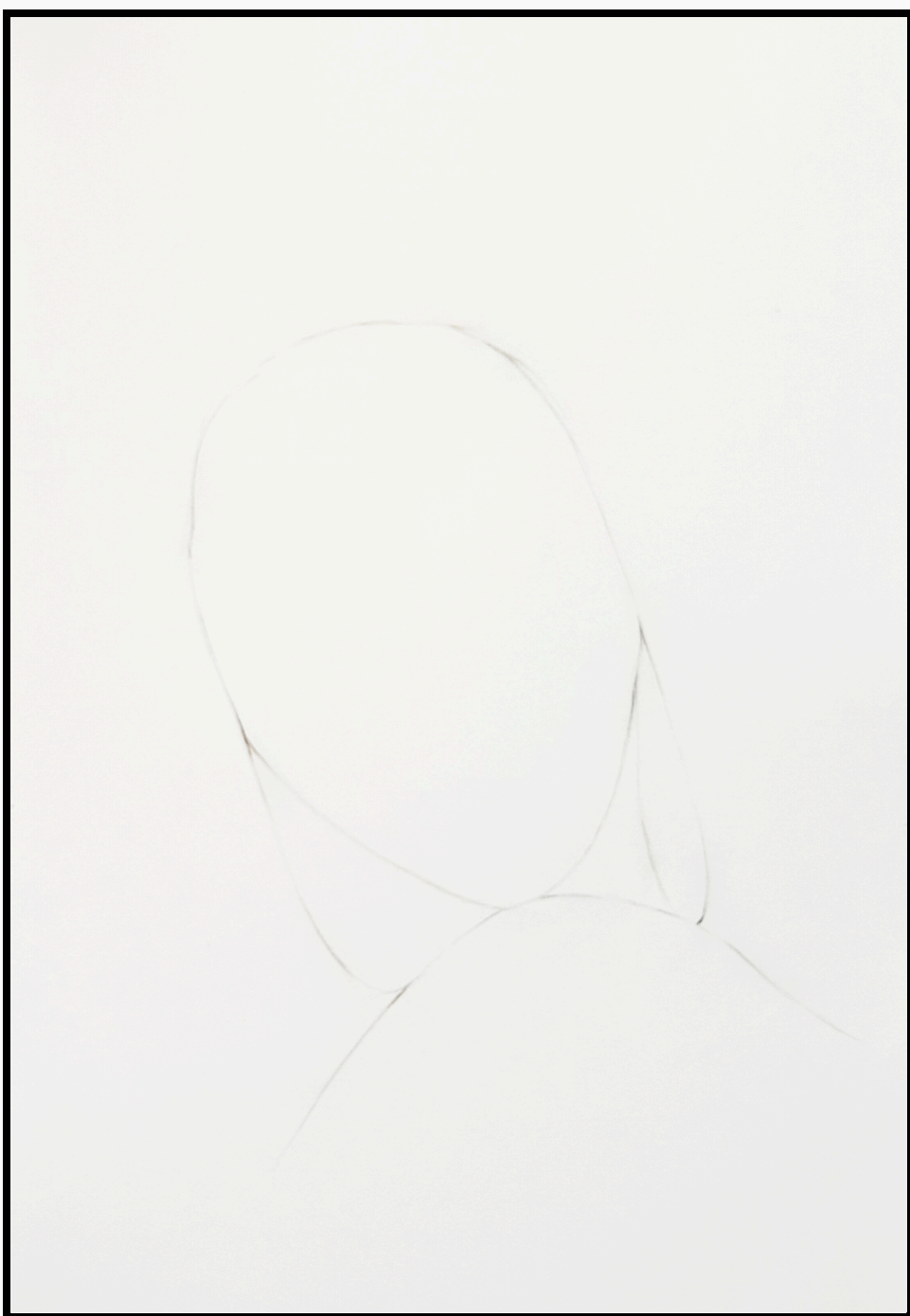


SIMONE
(April, 2016)

Drawings No. 0416 - 12.4.8.

From the collection Merine

Pencil on paper
8.3 x 11.7 inches (21.0 x 29.7. cm)

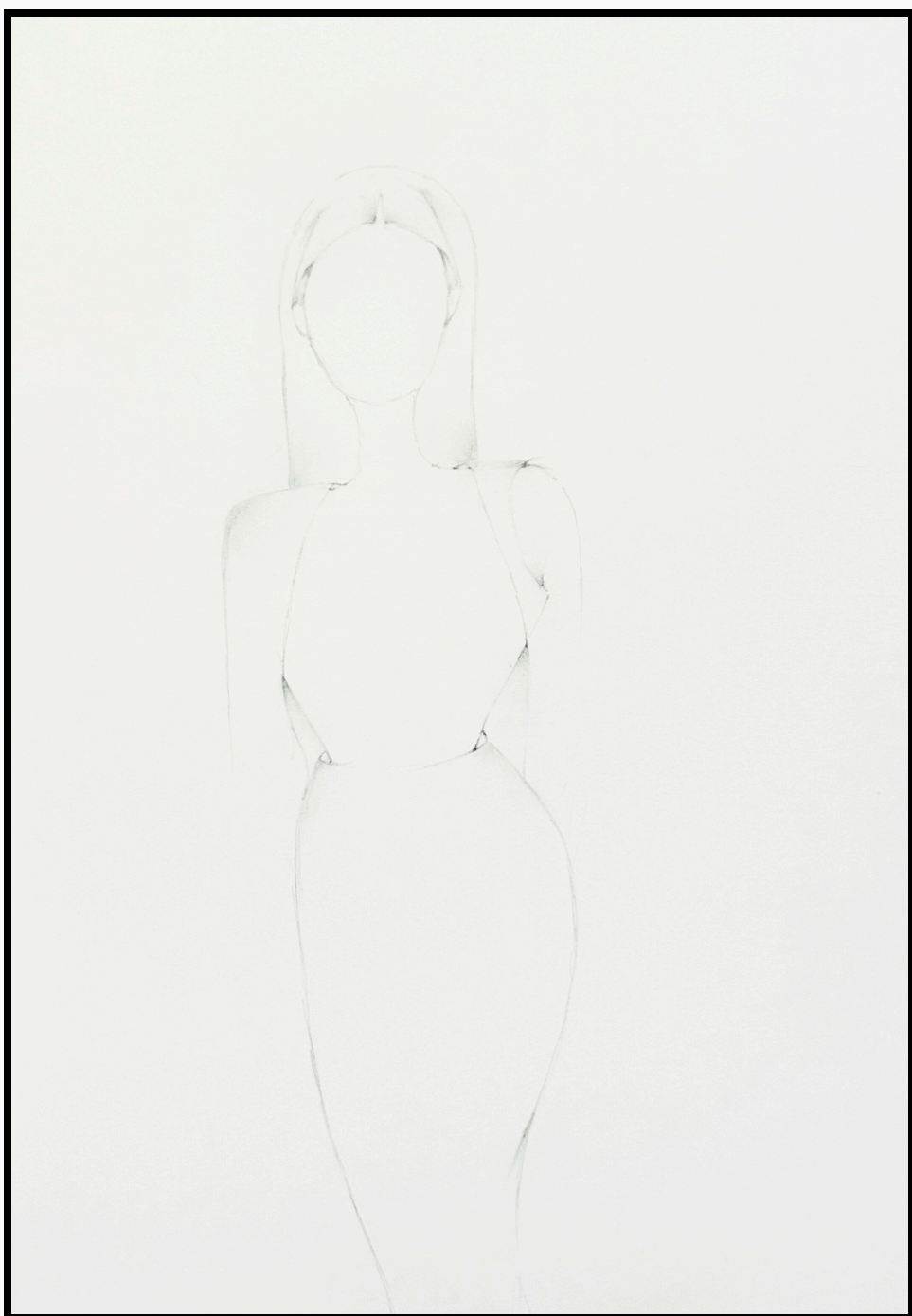


RIVER
(April, 2016)

Drawings No. 0416 - 12.4.3.

From the collection Merine

Pencil on paper
8.3 x 11.7 inches (21.0 x 29.7. cm)

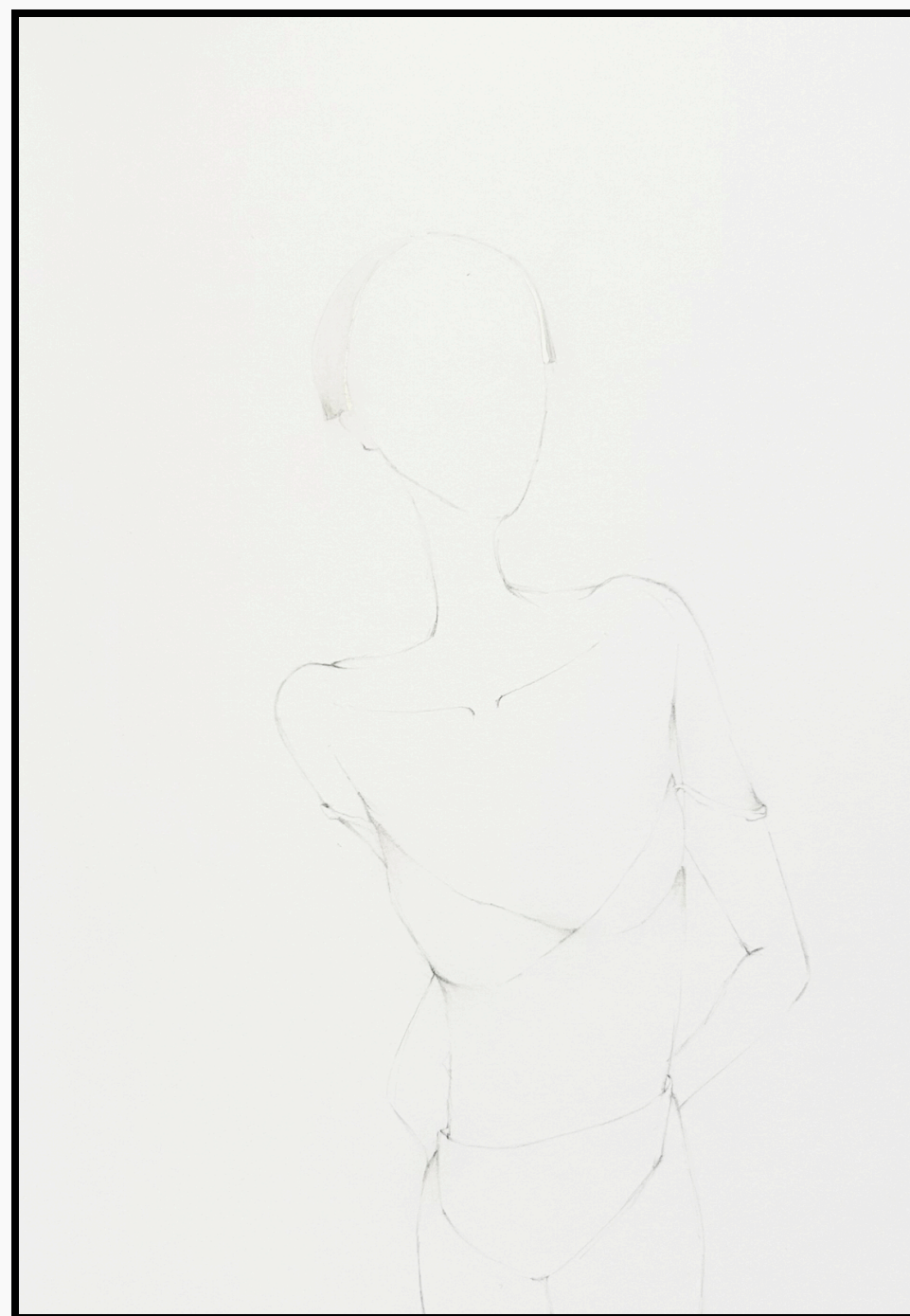


MOGLIE
(April, 2016)

Drawings No. 0416 - 12.4.6.

From the collection Merine

Pencil on paper
8.3 x 11.7 inches (21.0 x 29.7. cm)

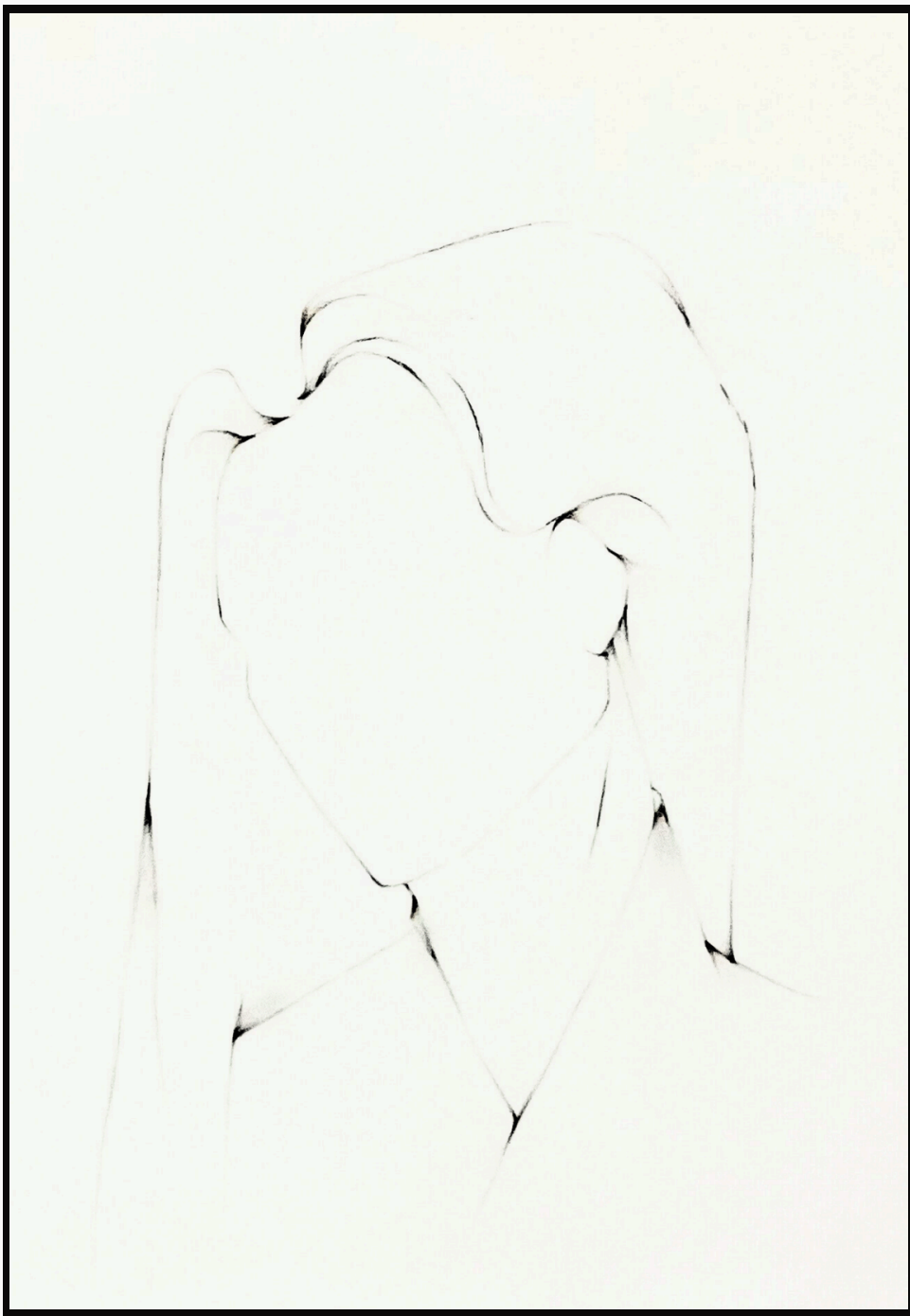


VEIN
(April, 2016)

Drawings No. 0416 - 12.4.9.

From the collection Merine

Pencil on paper
8.3 x 11.7 inches (21.0 x 29.7. cm)



SABLEN
(December, 2016)

Drawings No. 1216 - 11.4.1.

From the collection Wolf

Pencil on paper
8.3 x 11.7 inches (21.0 x 29.7. cm)

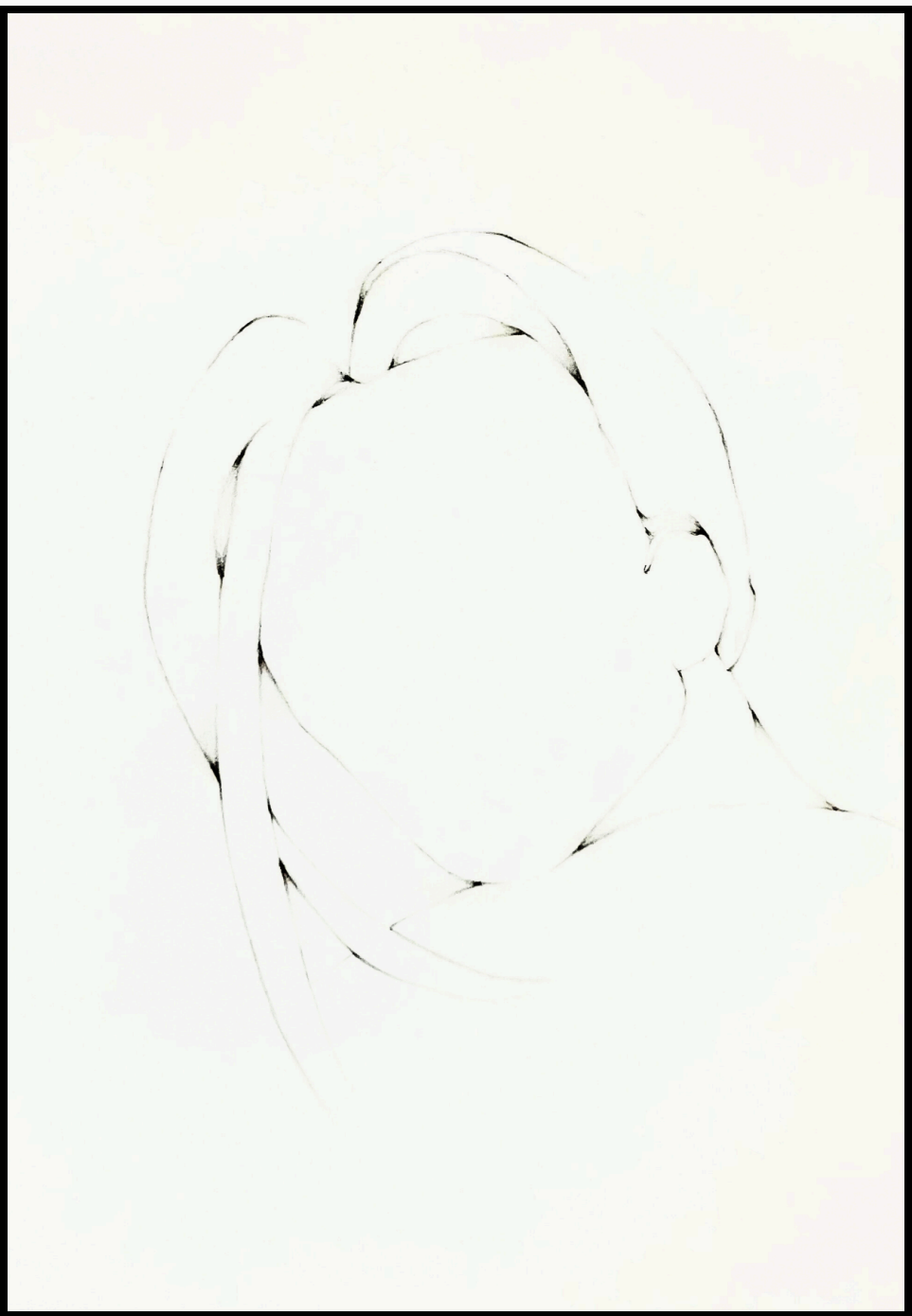


ZION
(December, 2016)

Drawings No. 1216 - 11.4.4.

From the collection Wolf

Pencil on paper
8.3 x 11.7 inches (21.0 x 29.7. cm)

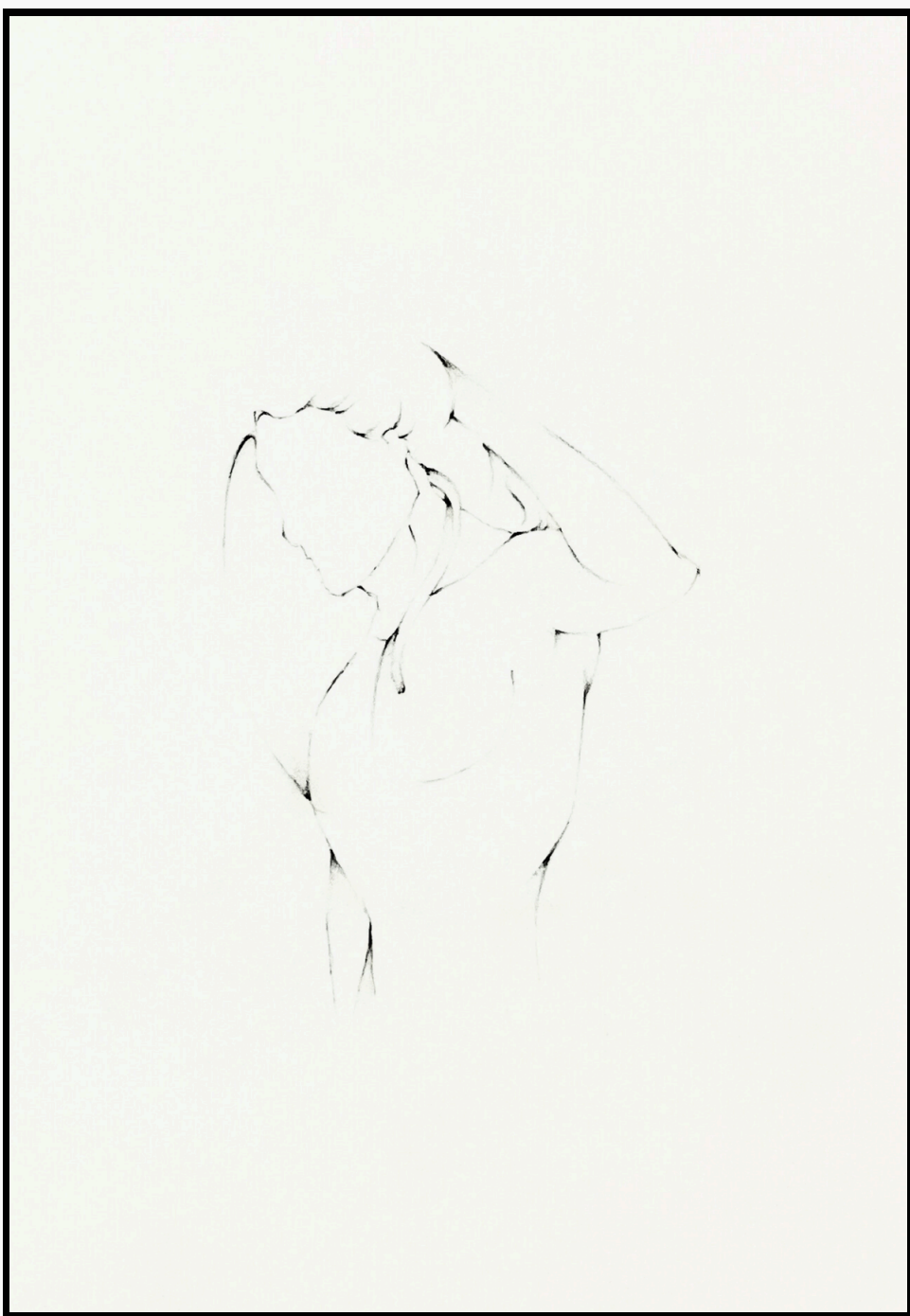


KODIAN
(December, 2016)

Drawings No. 1216 - 11.4.7.

From the collection Wolf

Pencil on paper
8.3 x 11.7 inches (21.0 x 29.7. cm)



TUNDREN
(December, 2016)

Drawings No. 1216 - 11.4.2.

From the collection Wolf

Pencil on paper
8.3 x 11.7 inches (21.0 x 29.7. cm)



SIERREN
(December, 2016)

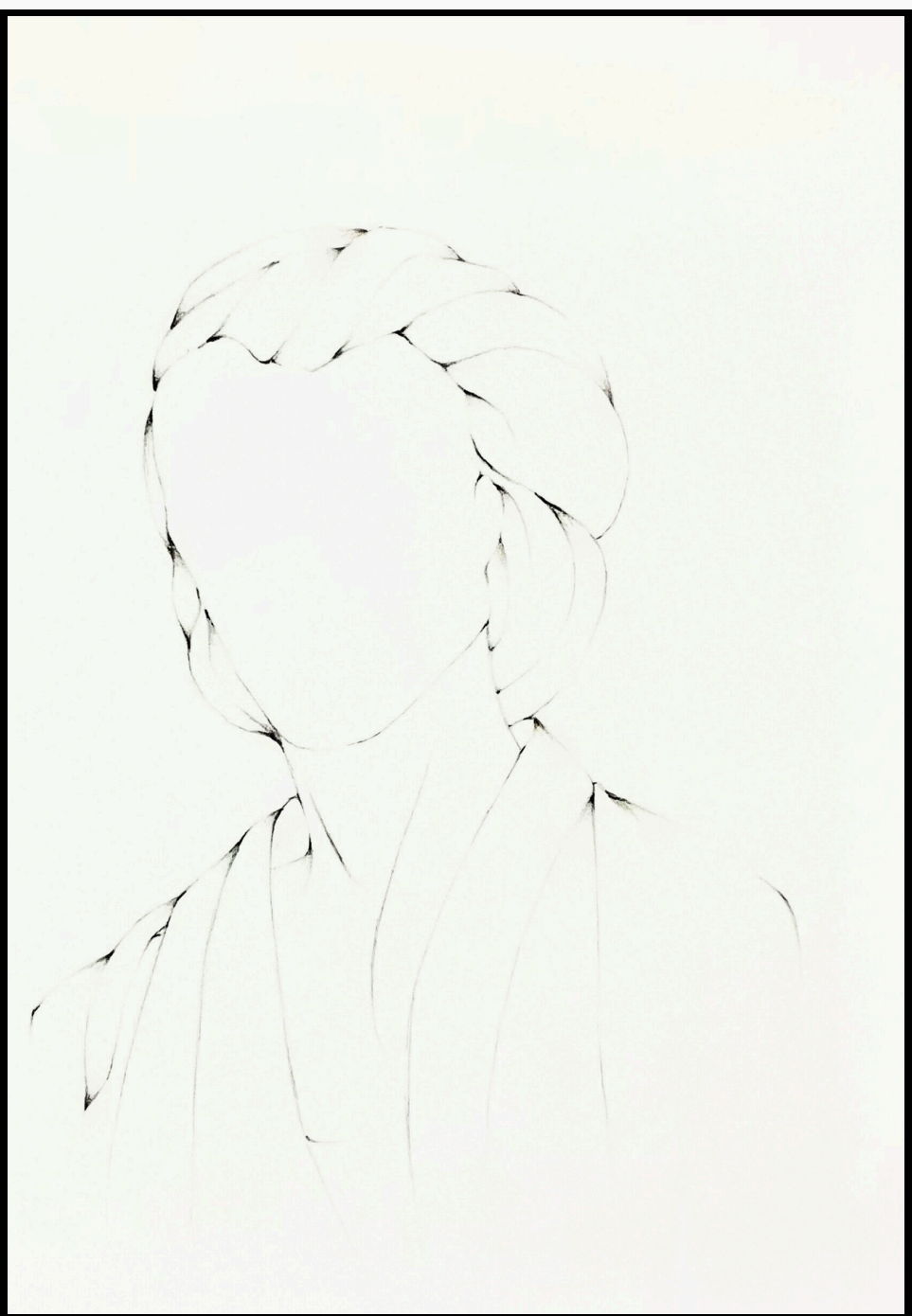
Drawings No. 1216 - 11.4.5.

From the collection Wolf

Pencil on paper
8.3 x 11.7 inches (21.0 x 29.7. cm)

Price on request

INQUIRE

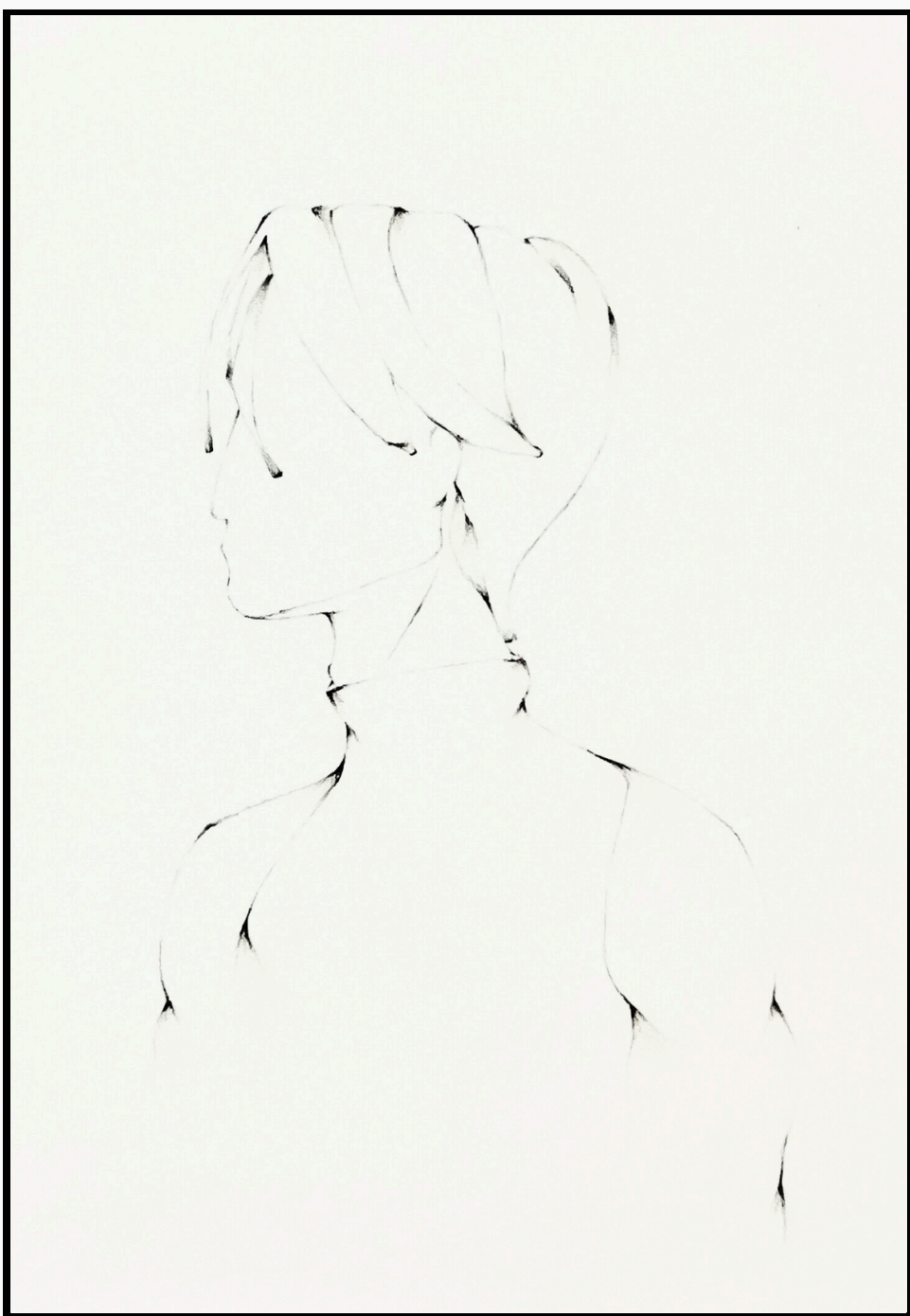


QUASEN
(December, 2016)

Drawings No. 1216 - 11.4.8.

From the collection Wolf

Pencil on paper
8.3 x 11.7 inches (21.0 x 29.7. cm)

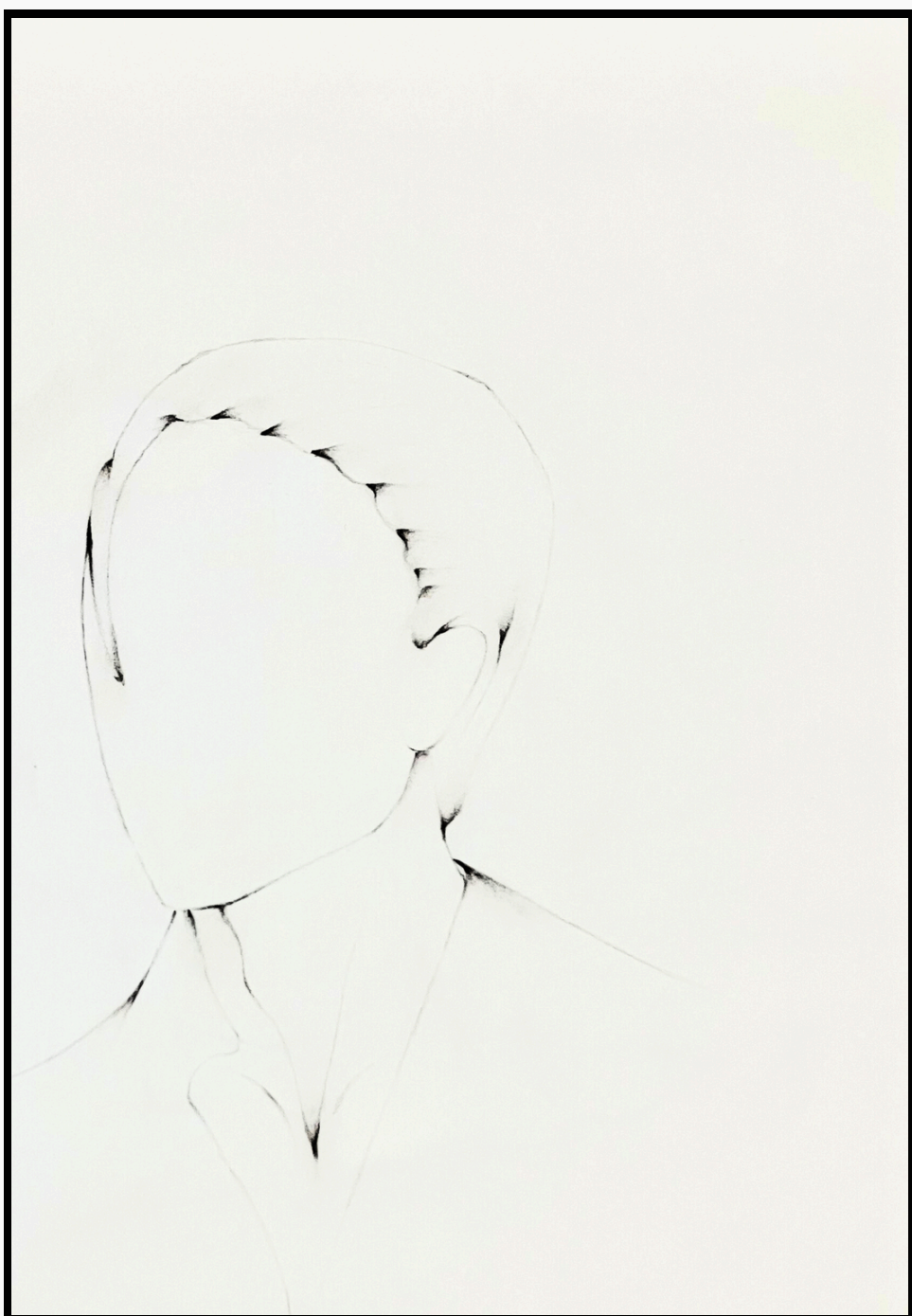


ORIEN
(December, 2016)

Drawings No. 1216 - 11.4.3.

From the collection Wolf

Pencil on paper
8.3 x 11.7 inches (21.0 x 29.7. cm)

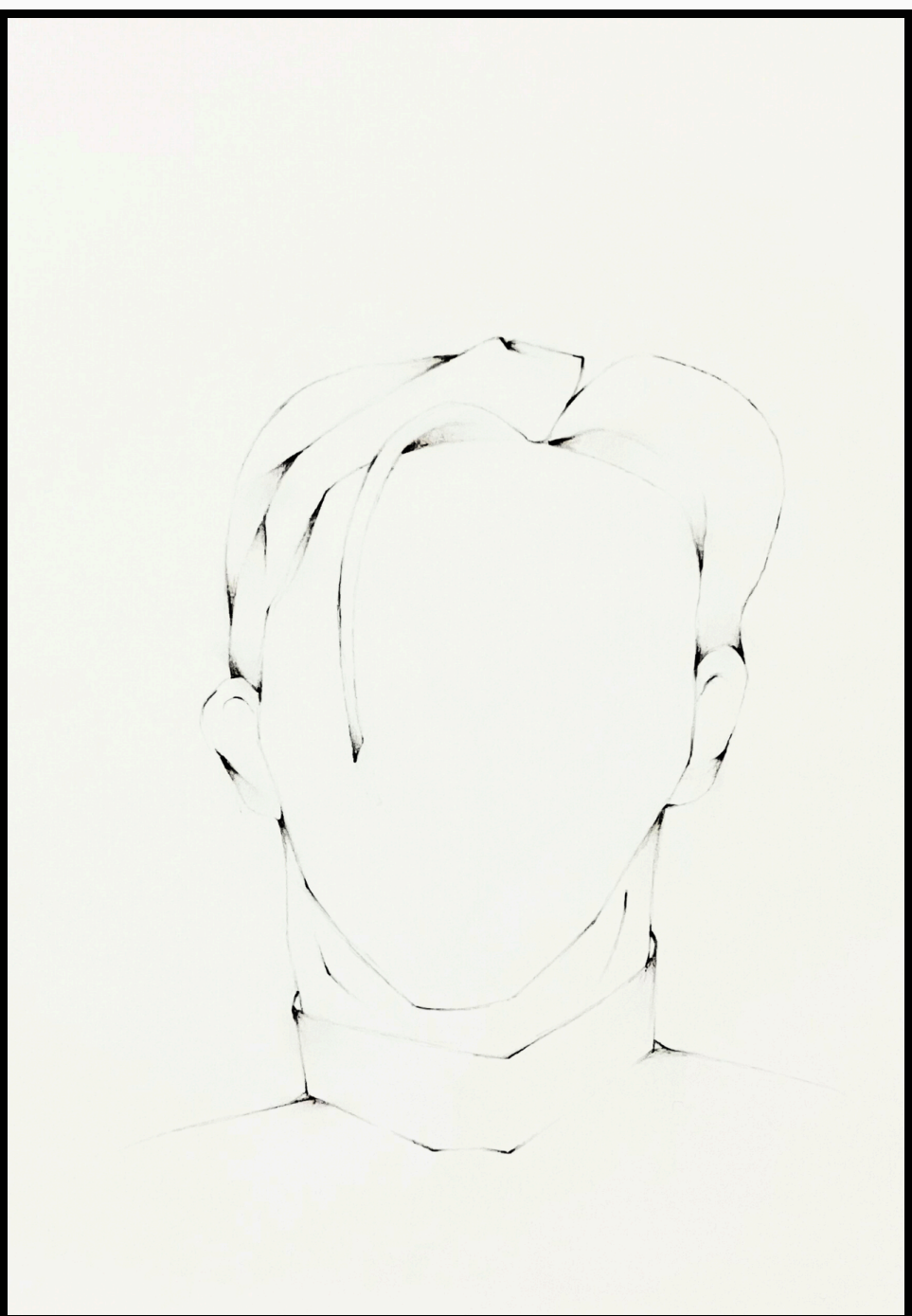


GRAYEN
(December, 2016)

Drawings No. 1216 - 11.4.6.

From the collection Wolf

Pencil on paper
8.3 x 11.7 inches (21.0 x 29.7. cm)



KESTREN
(December, 2016)

Drawings No. 1216 - 11.4.9.

From the collection Wolf

Pencil on paper
8.3 x 11.7 inches (21.0 x 29.7. cm)



CTENIZA
(August, 2017)

Drawings No. 0817 - 4.4.1.

From the collection Gossamer

Pencil on paper
8.3 x 11.7 inches (21.0 x 29.7. cm)



CYCLOSA
(August, 2017)

Drawings No. 0817 - 4.4.4.

From the collection Gossamer

Pencil on paper
8.3 x 11.7 inches (21.0 x 29.7. cm)



MISUMENA
(August, 2017)

Drawings No. 0817 - 4.4.7.

From the collection Gossamer

Pencil on paper
8.3 x 11.7 inches (21.0 x 29.7. cm)



CTENID
(August, 2017)

Drawings No. 0817 - 4.4.2.

From the collection Gossamer

Pencil on paper
8.3 x 11.7 inches (21.0 x 29.7. cm)

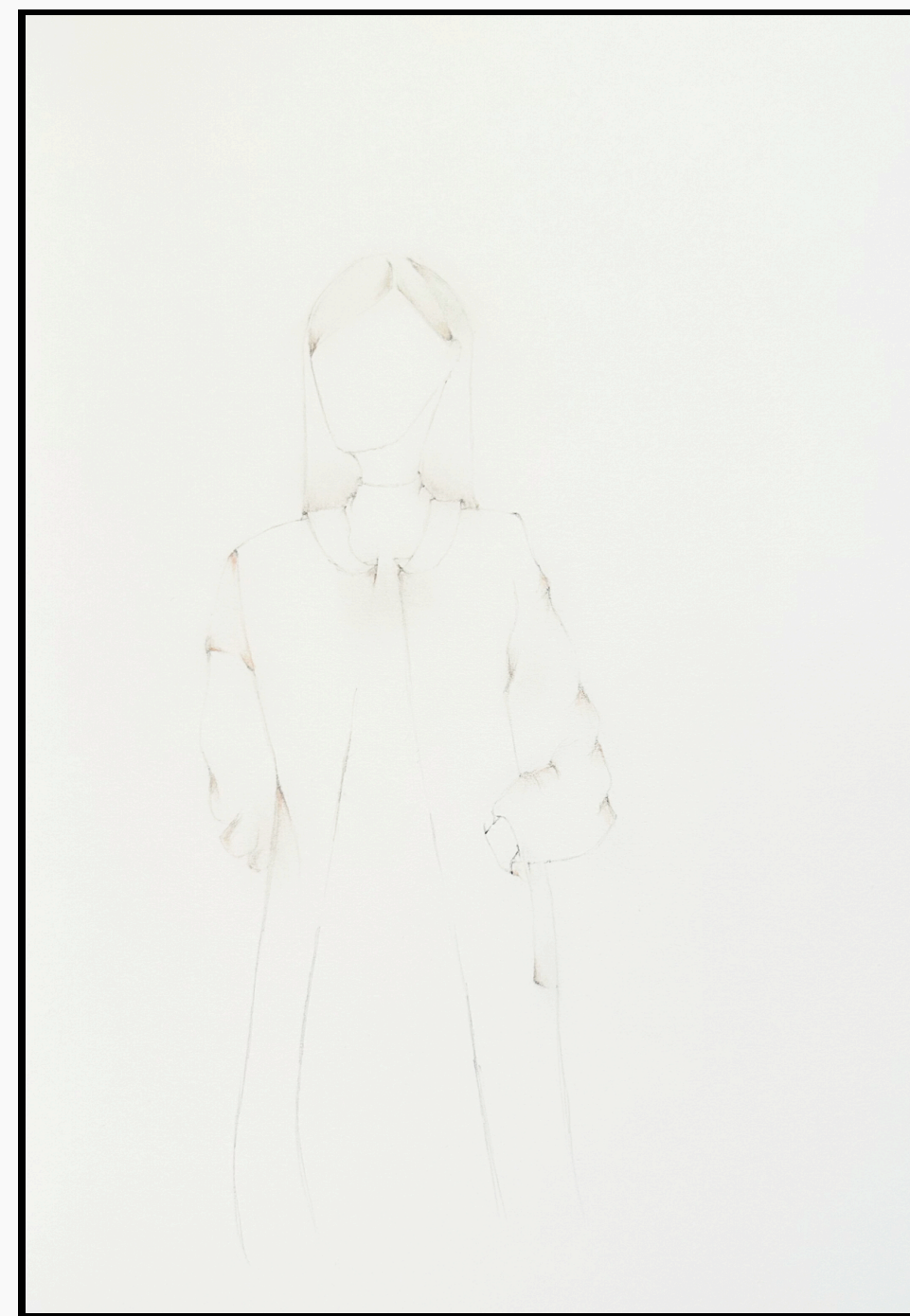


ERESUSA
(August, 2017)

Drawings No. 0817 - 4.4.5.

From the collection Gossamer

Pencil on paper
8.3 x 11.7 inches (21.0 x 29.7. cm)



MARPISSA
(August, 2017)

Drawings No. 0817 - 4.4.8.

From the collection Gossamer

Pencil on paper
8.3 x 11.7 inches (21.0 x 29.7. cm)

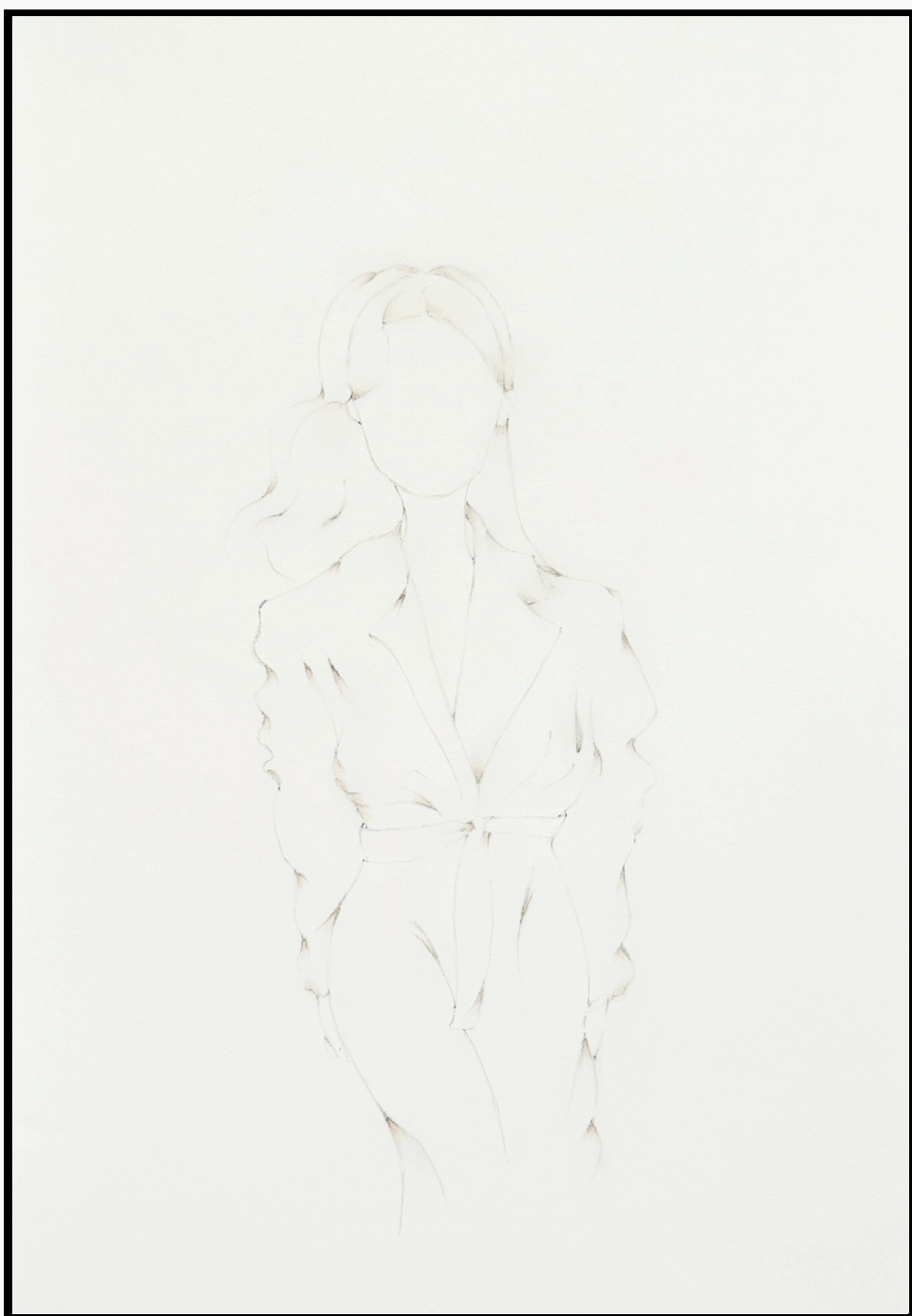


DYSDERA
(August, 2017)

Drawings No. 0817 - 4.4.3.

From the collection Gossamer

Pencil on paper
8.3 x 11.7 inches (21.0 x 29.7. cm)



NEPHILA
(August, 2017)

Drawings No. 0817 - 4.4.6.

From the collection Gossamer

Pencil on paper
8.3 x 11.7 inches (21.0 x 29.7. cm)

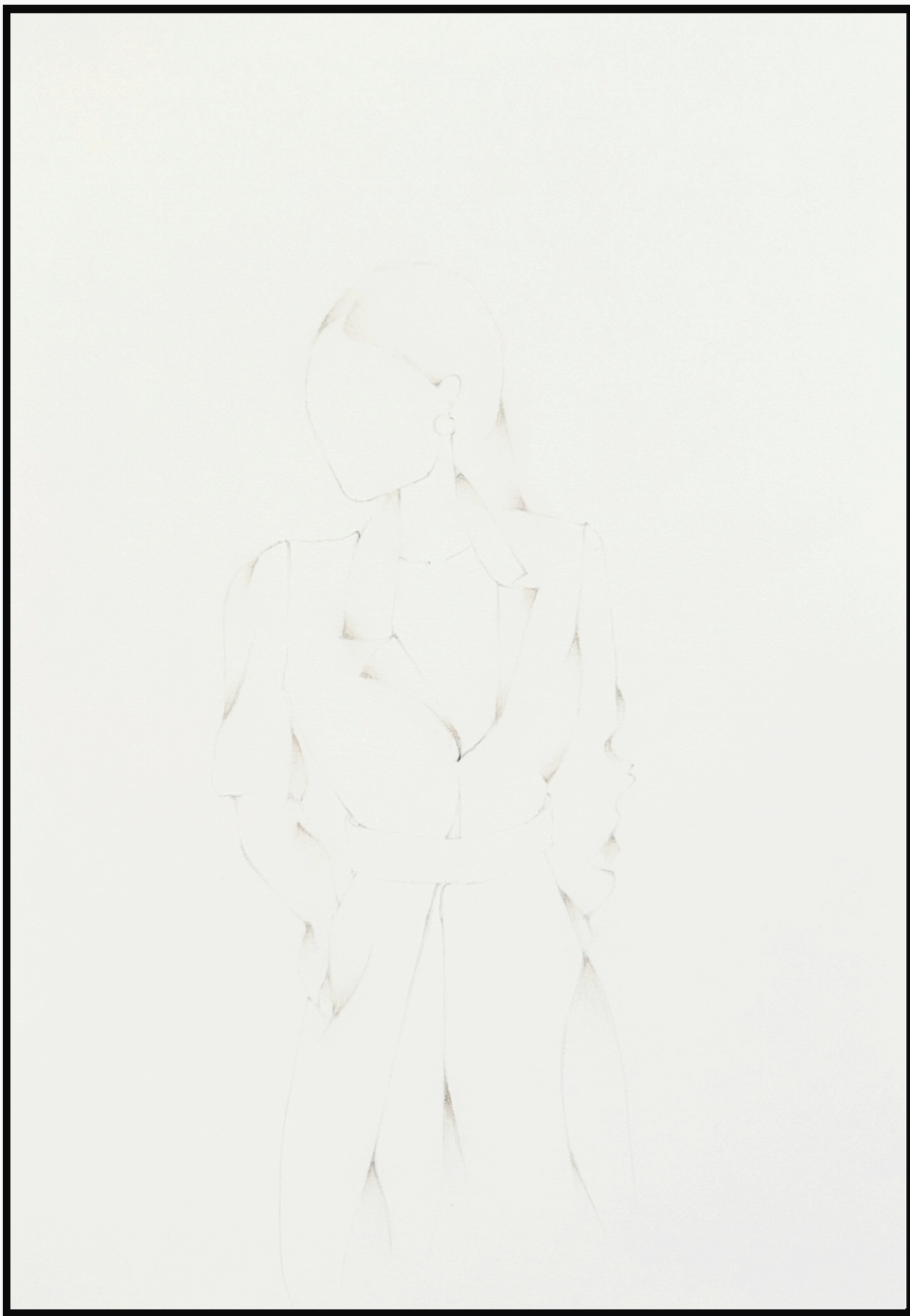


GONATIA
(August, 2017)

Drawings No. 0817 - 4.4.9.

From the collection Gossamer

Pencil on paper
8.3 x 11.7 inches (21.0 x 29.7. cm)



SPARASSIDA
(August, 2017)

Drawings No. 0817 - 4.4.10.

From the collection Gossamer

Pencil on paper
8.3 x 11.7 inches (21.0 x 29.7. cm)



PISAURA
(August, 2017)

Drawings No. 0817 - 4.4.13.

From the collection Gossamer

Pencil on paper
8.3 x 11.7 inches (21.0 x 29.7. cm)

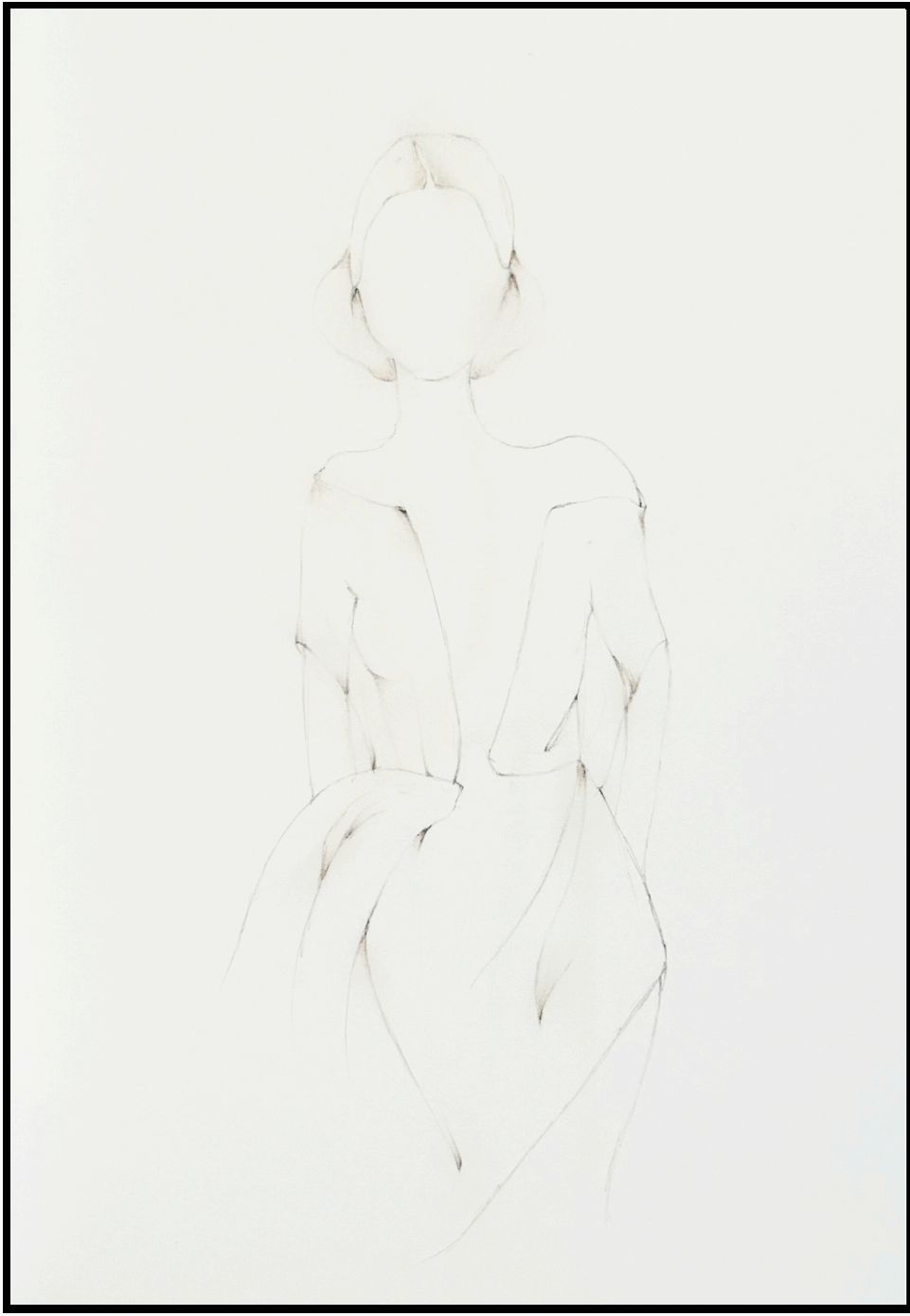


SELENOPA
(August, 2017)

Drawings No. 0817 - 4.4.16.

From the collection Gossamer

Pencil on paper
8.3 x 11.7 inches (21.0 x 29.7. cm)

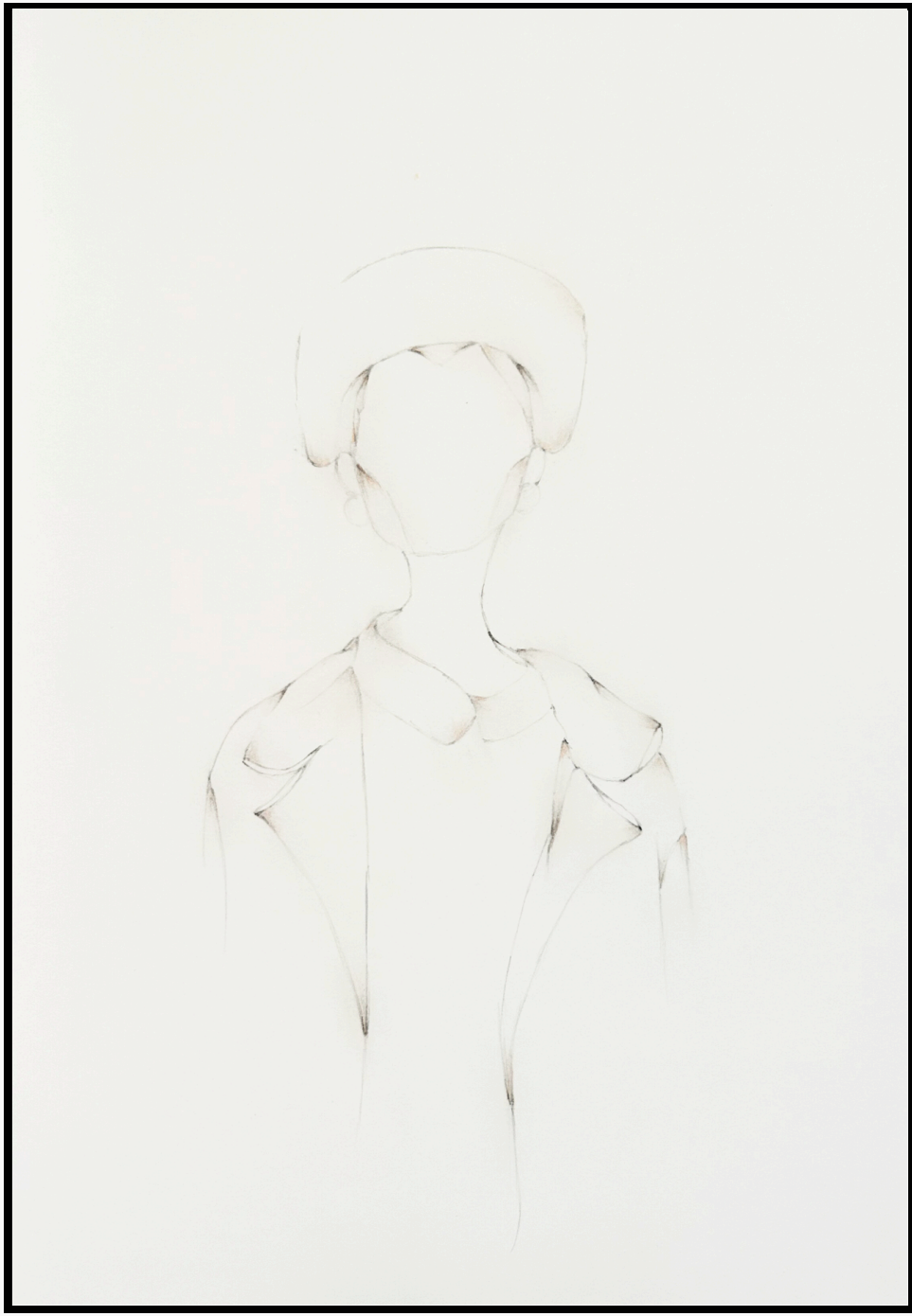


THERAPOSA
(August, 2017)

Drawings No. 0817 - 4.4.11.

From the collection Gossamer

Pencil on paper
8.3 x 11.7 inches (21.0 x 29.7. cm)

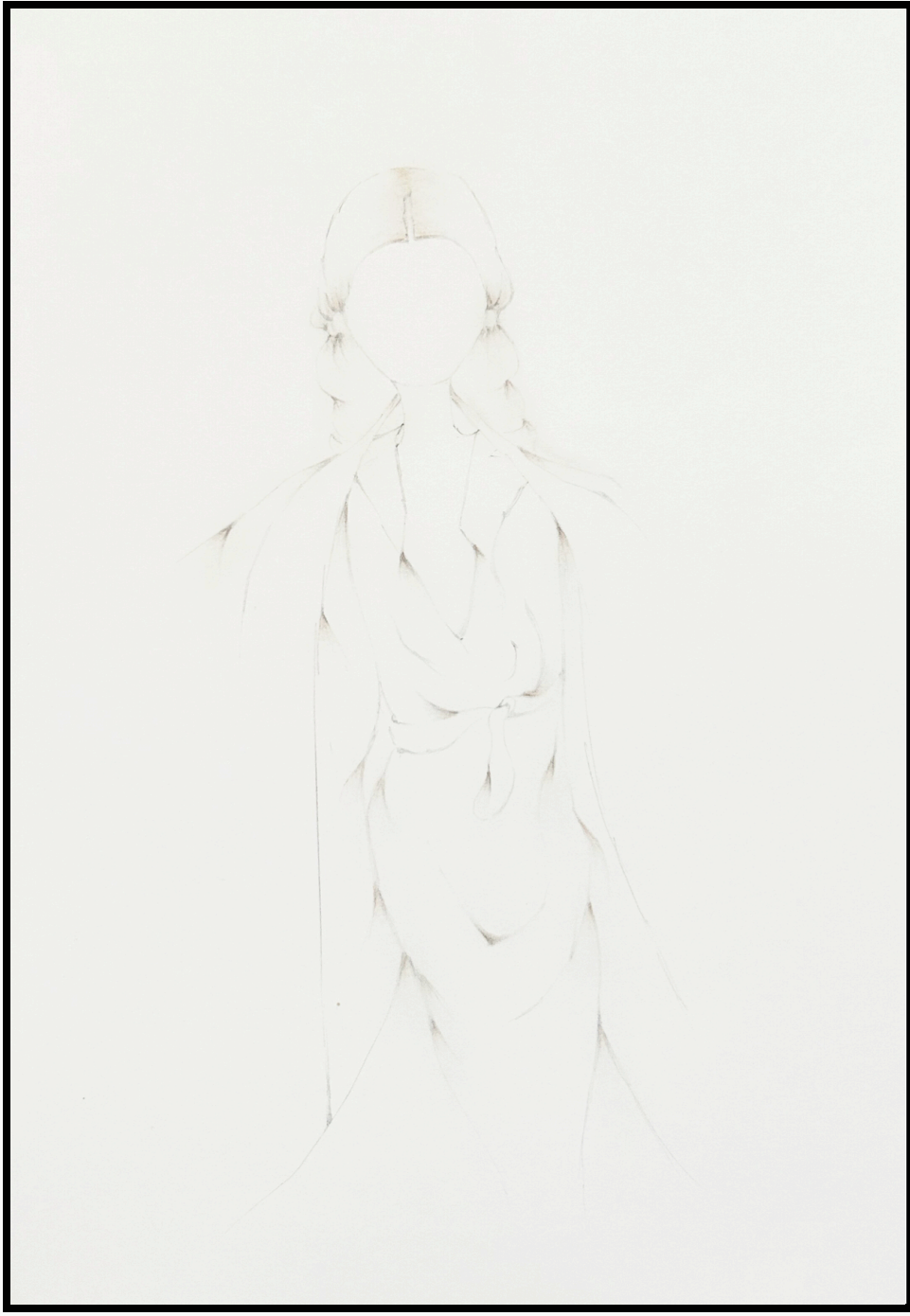


MYRMARACHNE
(August, 2017)

Drawings No. 0817 - 4.4.14.

From the collection Gossamer

Pencil on paper
8.3 x 11.7 inches (21.0 x 29.7. cm)

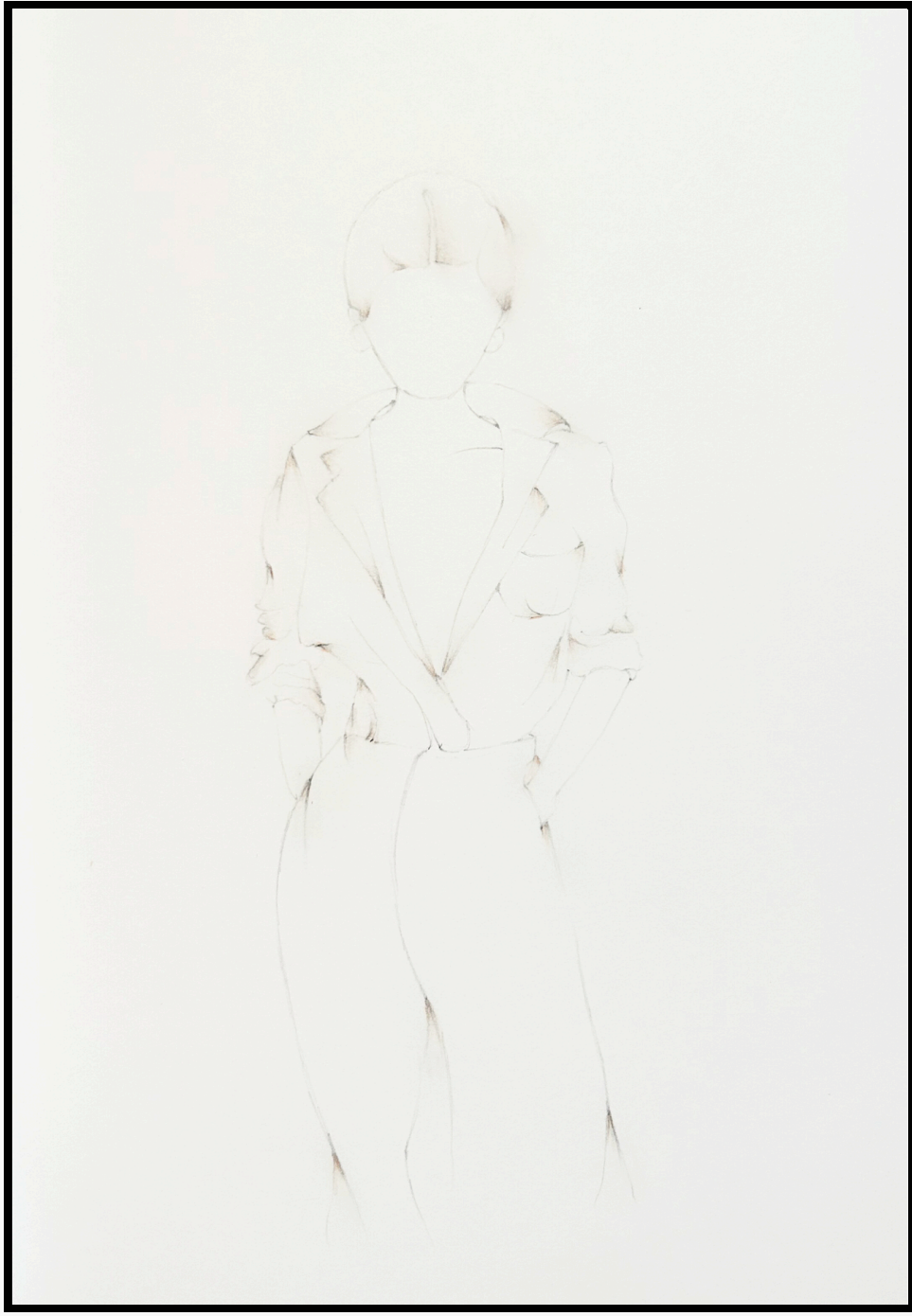


SEGESTRIA
(August, 2017)

Drawings No. 0817 - 4.4.12.

From the collection Gossamer

Pencil on paper
8.3 x 11.7 inches (21.0 x 29.7. cm)

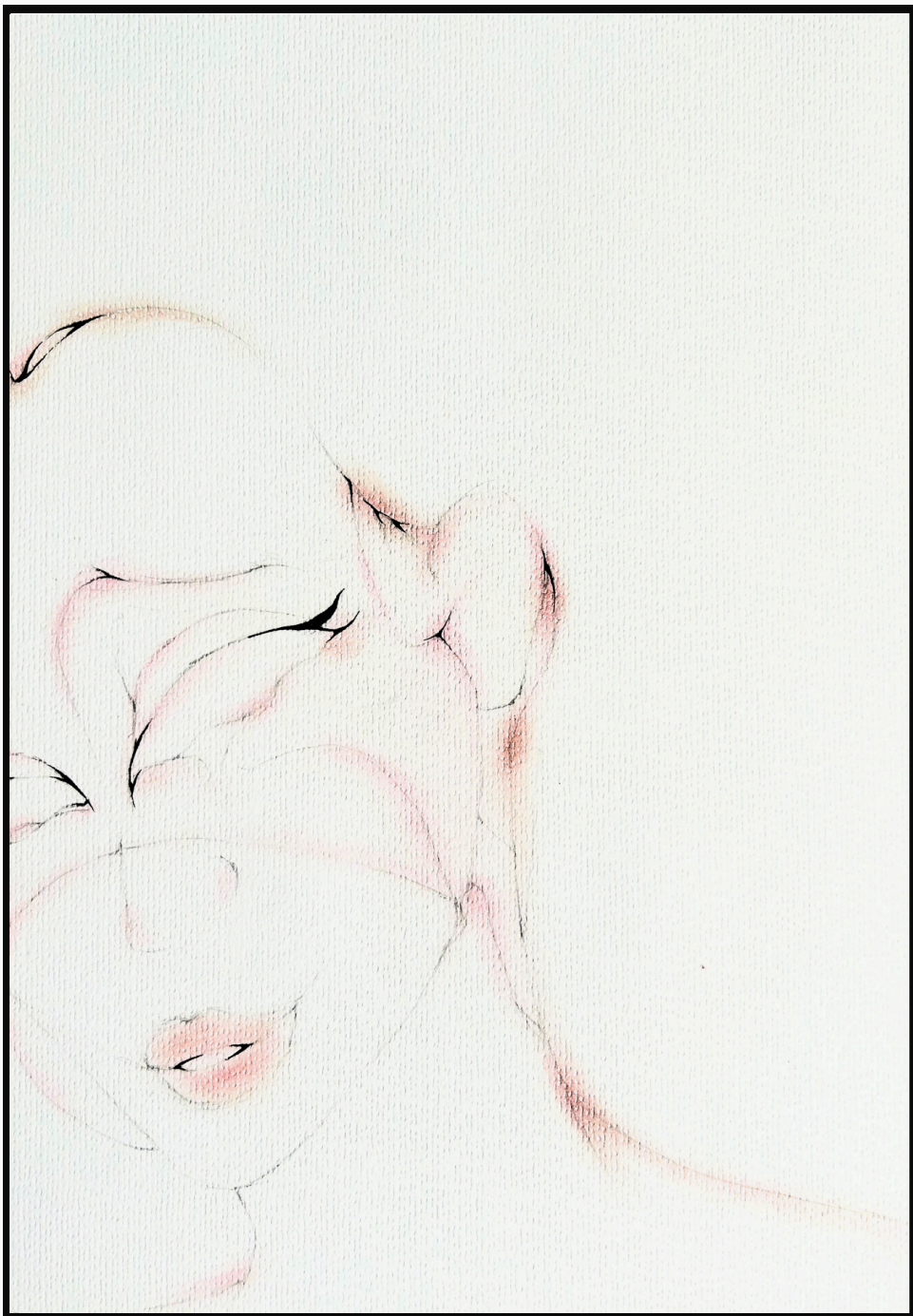


OPILIONA
(August, 2017)

Drawings No. 0817 - 4.4.15.

From the collection Gossamer

Pencil on paper
8.3 x 11.7 inches (21.0 x 29.7. cm)



CIRCE
(April, 2021)

Drawings No. 0421 - 5.4.1.

From the collection Circus

Pencil on watercolor paper
8.3 x 11.7 inches (21.0 x 29.7. cm)

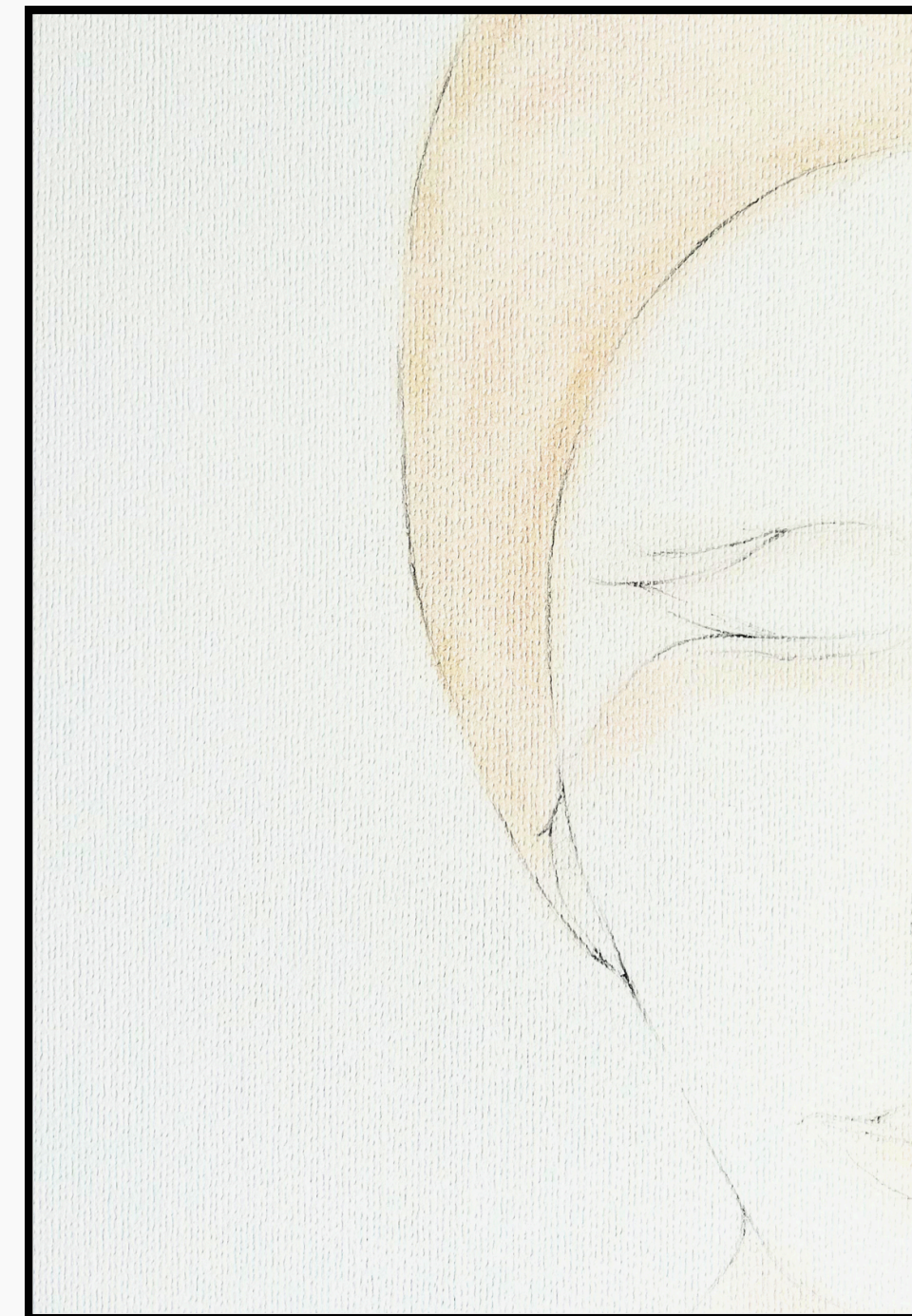


DESERTED
(July, 2021)

Drawings No. 0721 - 6.4.1.

From the collection Hermon

Pencil on watercolor paper
8.3 x 11.7 inches (21.0 x 29.7. cm)



HERMON
(July, 2021)

Drawings No. 0721 - 6.4.4.

From the collection Hermon

Pencil on watercolor paper
8.3 x 11.7 inches (21.0 x 29.7. cm)



ASHER
(April, 2021)

Drawings No. 0421 - 5.4.2.

From the collection Circus

Pencil on watercolor paper
8.3 x 11.7 inches (21.0 x 29.7. cm)

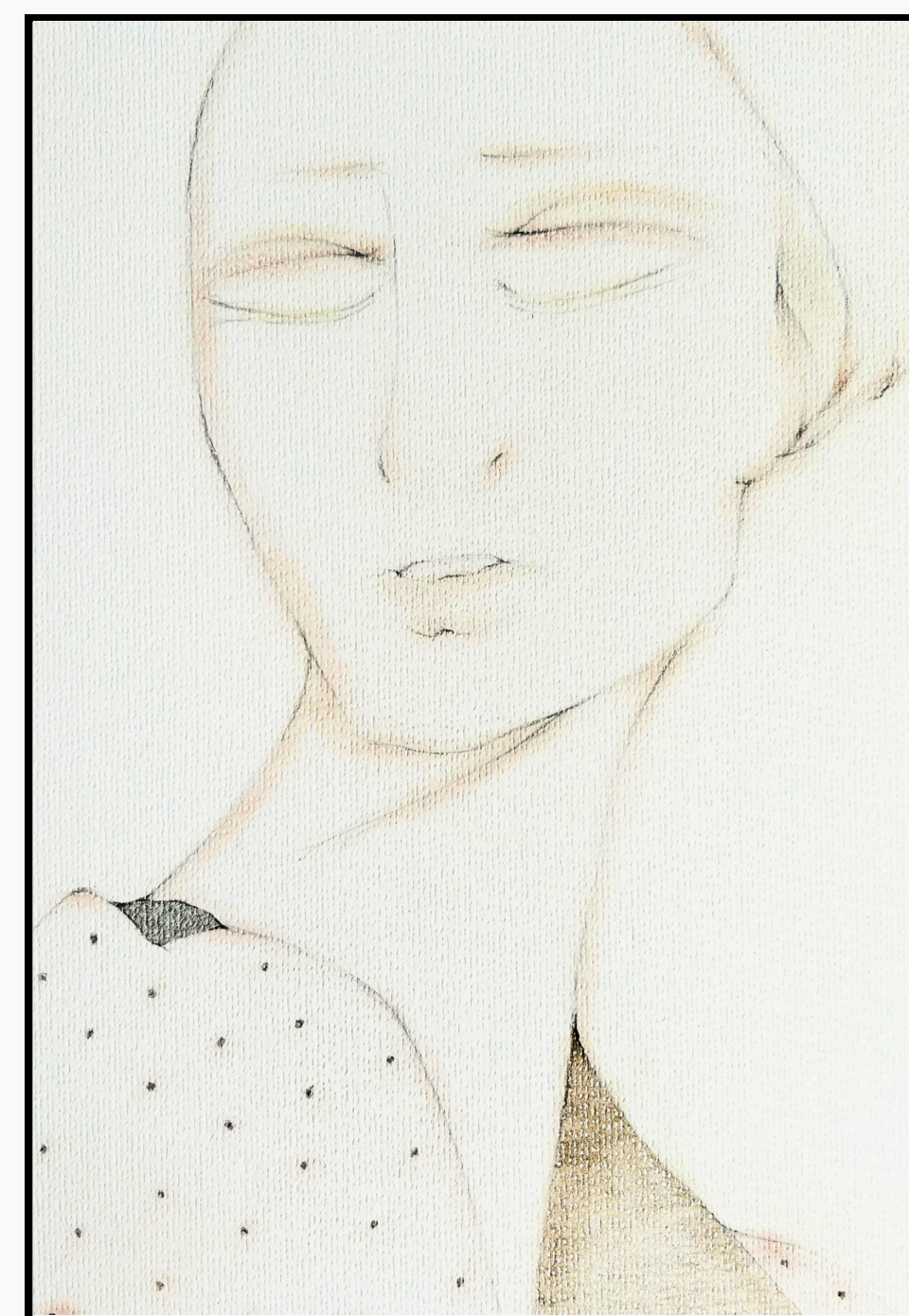


RUE
(July, 2021)

Drawings No. 0721 - 6.4.2.

From the collection Hermon

Pencil on watercolor paper
8.3 x 11.7 inches (21.0 x 29.7. cm)

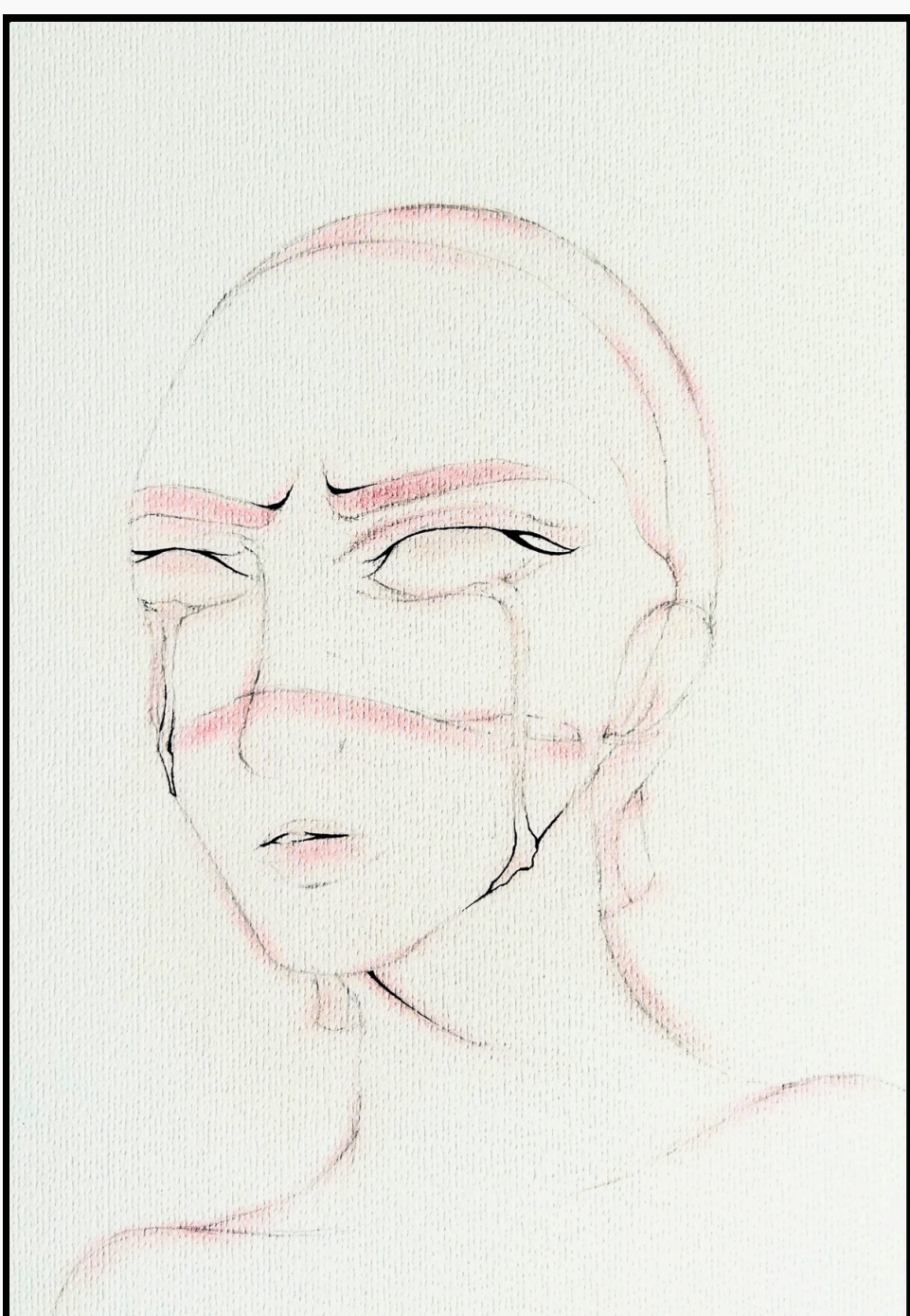


ACHE
(July, 2021)

Drawings No. 0721 - 6.4.5.

From the collection Hermon

Pencil on watercolor paper
8.3 x 11.7 inches (21.0 x 29.7. cm)



CHARLIE
(April, 2021)

Drawings No. 0421 - 5.4.3.

From the collection Circus

Pencil on watercolor paper
8.3 x 11.7 inches (21.0 x 29.7. cm)

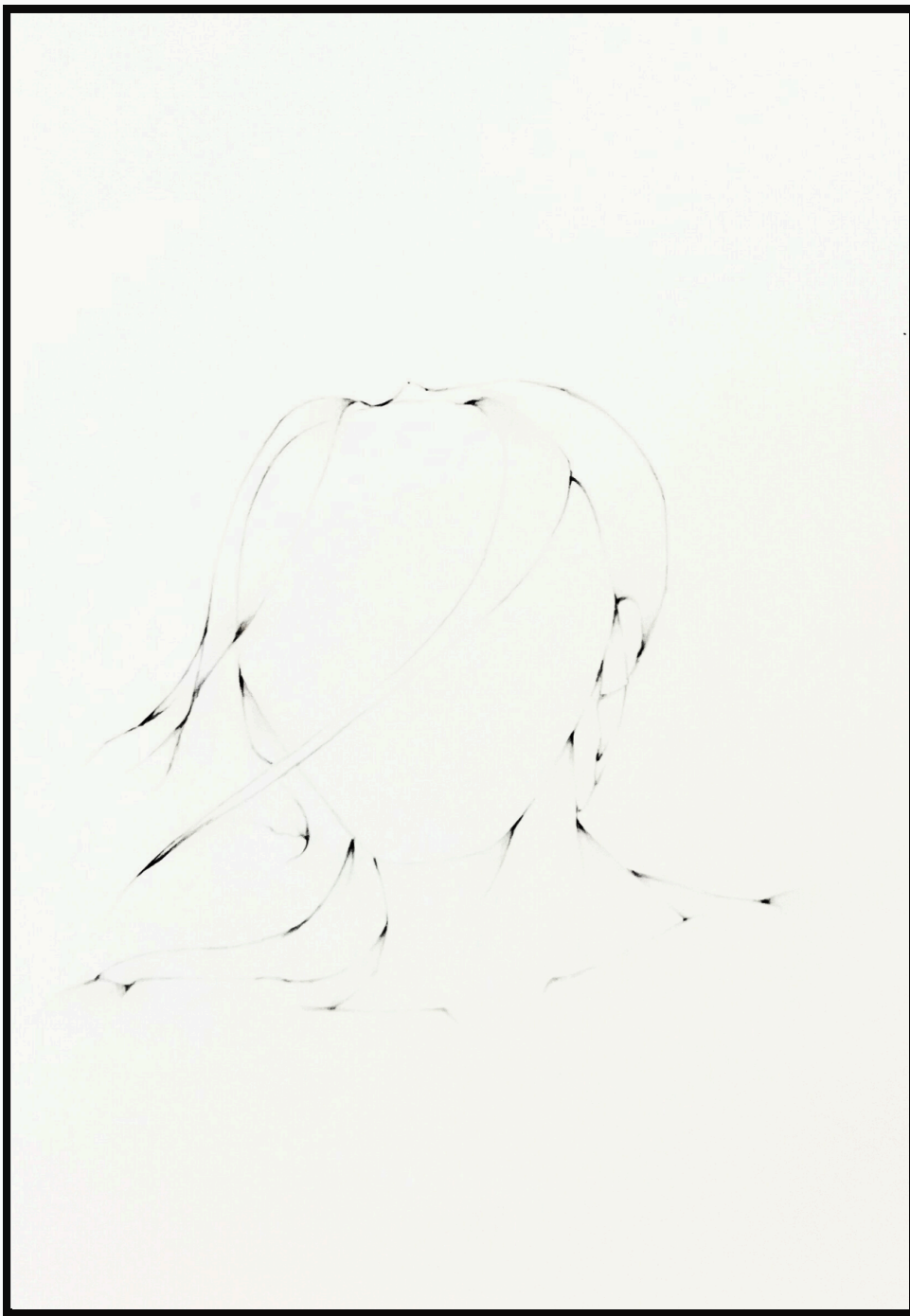


LAMENT
(July, 2021)

Drawings No. 0721 - 6.4.3.

From the collection Hermon

Pencil on watercolor paper
8.3 x 11.7 inches (21.0 x 29.7. cm)



ROCK SALT
(October, 2021)

Drawings No. 1021 - 7.3.1.

From the collection The Holy

Pencil on paper
11.7 x 16.5 inches (29.7 x 42 cm)

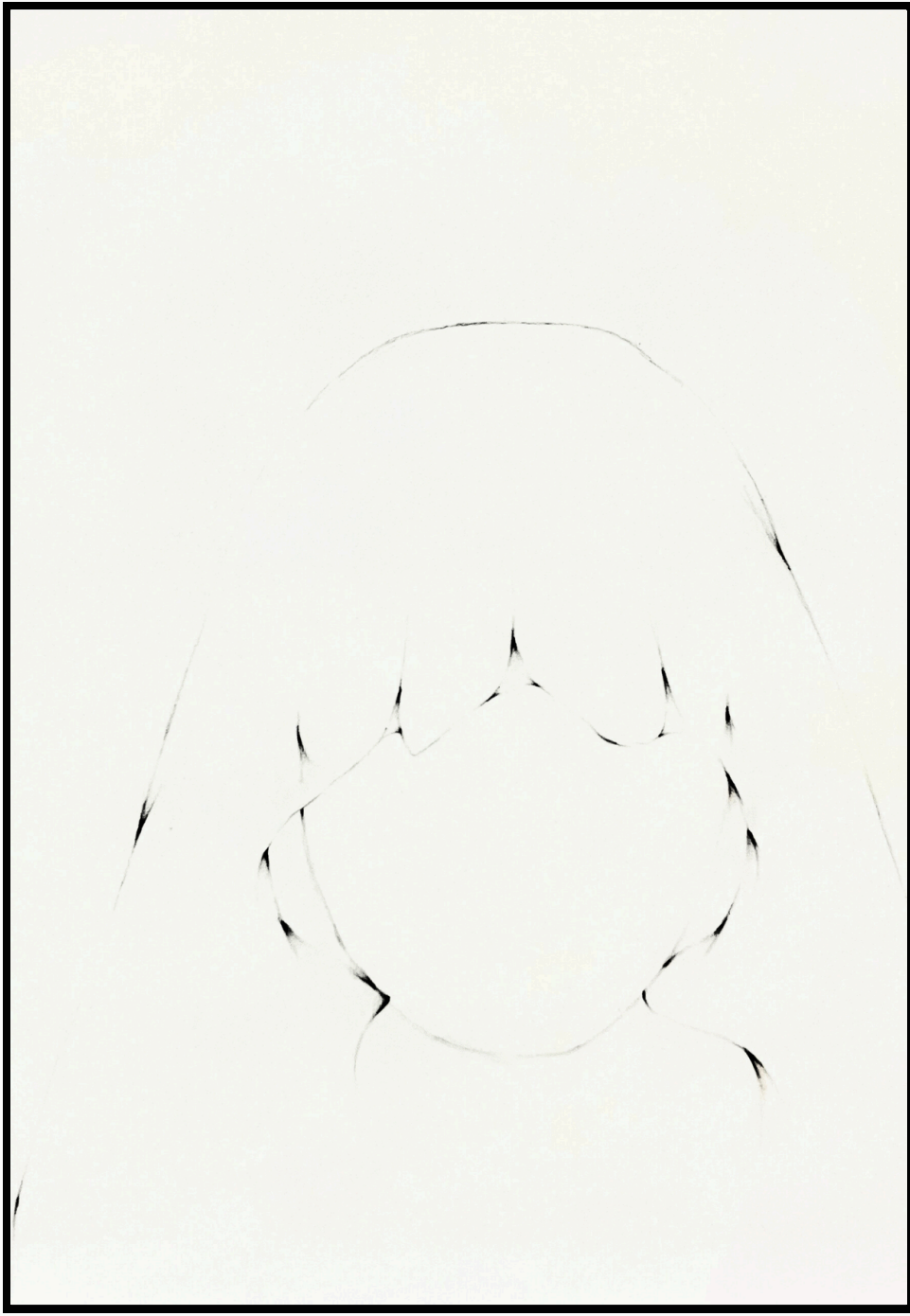


VULNERABILE
(October, 2021)

Drawings No. 1021 - 7.3.4.

From the collection The Holy

Pencil on paper
11.7 x 16.5 inches (29.7 x 42 cm)

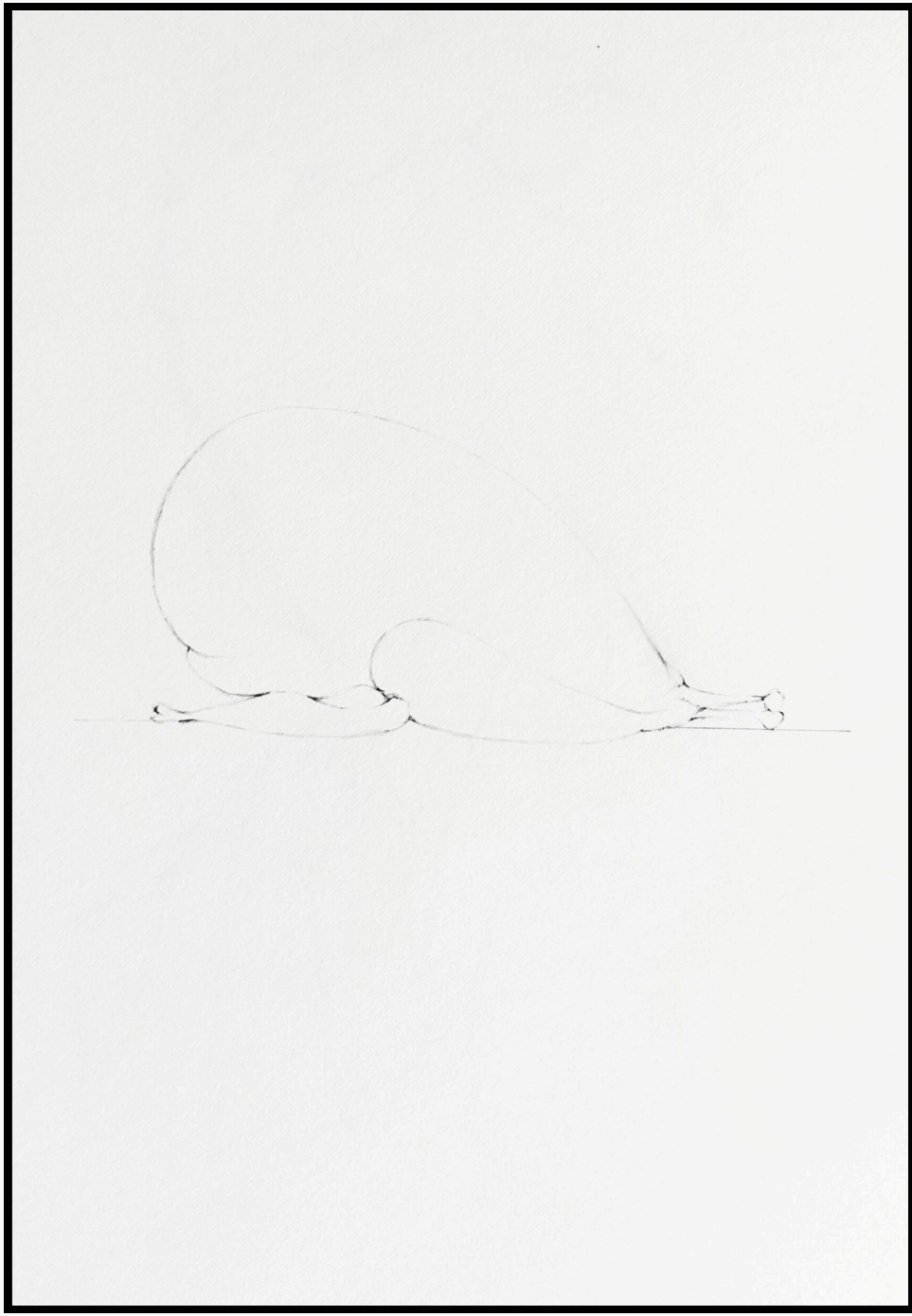


THE HOLY
(October, 2021)

Drawings No. 1021 - 7.3.2.

From the collection The Holy

Pencil on paper
11.7 x 16.5 inches (29.7 x 42 cm)

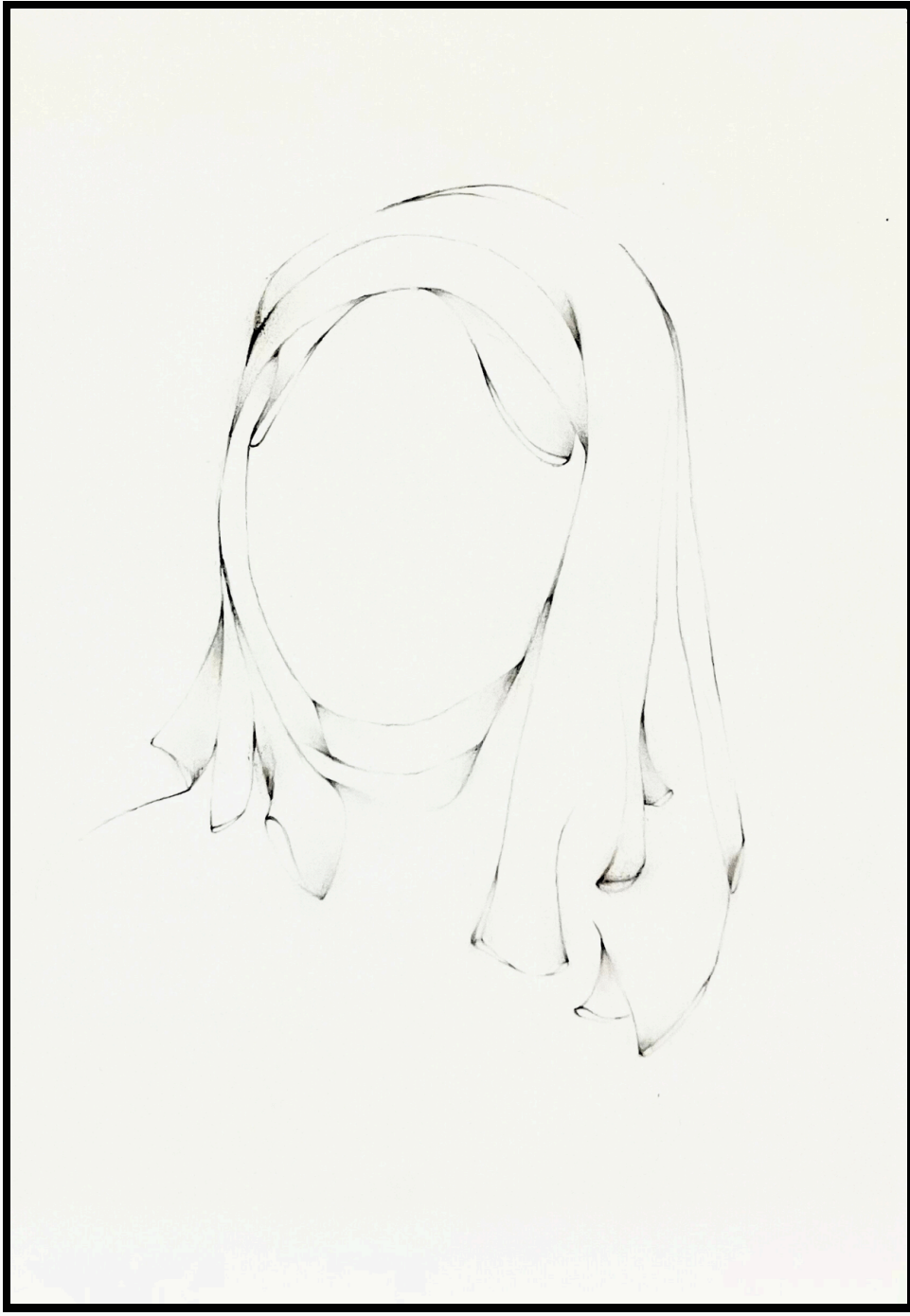


CHICKEN
(October, 2021)

Drawings No. 1021 - 7.3.5.

From the collection The Holy

Pencil on paper
11.7 x 16.5 inches (29.7 x 42 cm)

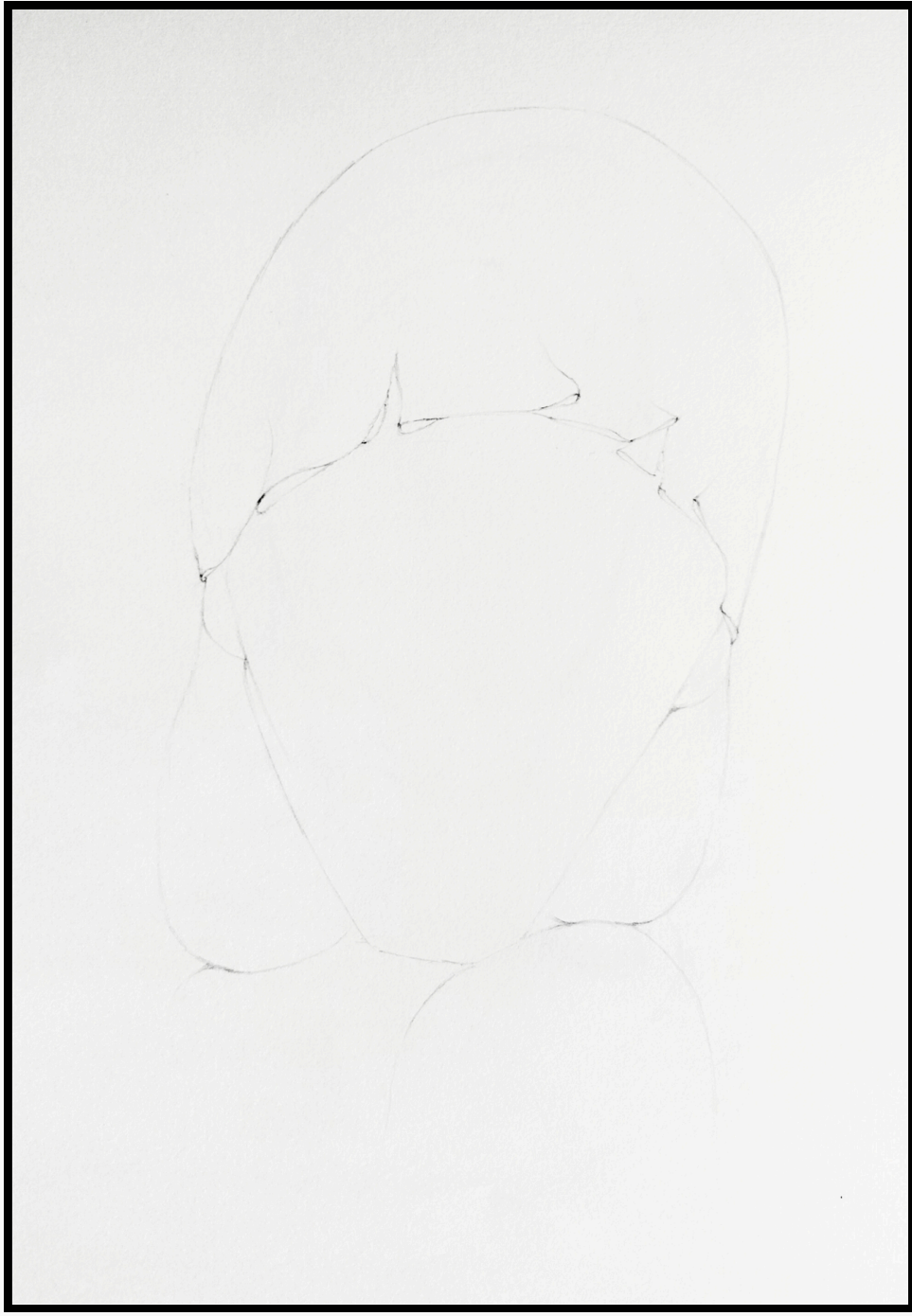


SORELLE
(October, 2021)

Drawings No. 1021 - 7.3.3.

From the collection The Holy

Pencil on paper
11.7 x 16.5 inches (29.7 x 42 cm)



INVOGUE
(October, 2021)

Drawings No. 1021 - 7.3.6.

From the collection The Holy

Pencil on paper
11.7 x 16.5 inches (29.7 x 42 cm)



Drawings No. 0416 - 12.4.4.

For enquiries regarding acquisitions, licensing, or any other questions related to the artworks featured in this catalogue, please visit the website at www.khazari.com, or contact directly via email at enquiries@khazari.com.

All artworks featured in this catalogue are available for acquisition subject to availability. Our team ensures the highest standards of packaging, handling, and shipping. Each piece is carefully prepared using archival-quality materials and protective measures to guarantee safe transit.

Delivery timelines vary depending on location and the nature of the artwork. Upon acquisition, detailed shipping instructions and tracking information will be provided. We recommend contacting us for personalized assistance with handling, installation, or any specific logistical requirements.